

# Oranga

ANGUS



4<sup>th</sup> Bull Sale

**Thursday, 26th September 2024**

**12 noon, Rongotea Sale Yards**

50 YEARLING BULLS

**Oranga Angus are raised on a 416Ha  
hill country property in Apiti, Manawatu**

- \* Easy Calving
- \* Low birth weight
- \* Docile temperament
- \* Active/alert calves at birth
- \* Tough durable cattle
- \* Industry leading sires used



AngusPRO

ENQUIRIES TO:

NZFL Agent - Darryl Harwood, M: 027 449 1174 or Vendor - Blair McCarroll, M: 027 247 7143

Sale will be livestreamed and on-line bidding available on [MyLivestock.co.nz](http://MyLivestock.co.nz)

Auctioneers

**NZ FARMERS LIVESTOCK**

Online bidding

**MyLiveStock**

# NZ FARMERS LIVESTOCK

*Working with Farmers for Farmers*



Here at NZ Farmers Livestock, we take pride in selling on behalf of Oranga Angus Stud, and are committed to working with farmers for farmers. We are proud to be working with Blair and his family and supporting their sale at the Rongotea Sale Yards on 26th September 2024.

**We are pleased to advise that the Oranga Angus Bull Sale will be live streamed via MyLiveStock. For registration, or more information call 0800 695 483.**

Our hugely popular Bull Plan option is tailor made for dairy farmers to purchase their bulls when cash is limited and repay when the bulls are sold through NZ Farmers Livestock Ltd.

We are 100% NZ owned and operated, and have a long-standing and established history in the livestock market. We are home to MyLiveStock, New Zealand's credible and evolving livestock network, a website and app providing clients with a livestock trading platform.

**For all your livestock requirements, contact us today.**



**Darryl Harwood**  
NZFL Agent  
027 449 1174

**MyLiveStock**  
Website | Mobile | App

# Oranga

## ANGUS

### 4th Bull Sale - 26th September 2024 - 12 noon, Rongotea Sale Yards

# 50x Yearling Bulls

Light lunch and refreshments will be provided

## FOREWORD

Welcome to our Oranga Angus R1 Bull Sale.

Oranga Angus have been farmed in Apiti, Manawatu for the past 16 years on our 416 ha Hill Country property in conjunction with our 2200 high performing ewe flock.

Breeding bulls for the dairy industry with a focus on low birth weight and ease of calving. All calves weighed and tagged at birth. APR recorded with EBVs. Cows are calved behind a wire. Any bad temperament is culled. All heifers are calved as 2yr olds. We have previously used Waigroup bulls for 10 years. Waigroup has selected for heifer mating characteristics since 1974. They are tough and durable.

This year's bulls have been "AI" to world leading sires to put more carcass IMF and growth into our cattle.

We stand by our bulls. Customer satisfaction is very important to us and we would look to resolve any issues quickly.

We would like to sincerely thank all those who have supported us over the years to get to this point. We look forward to seeing you at our sale.

Kind regards,

Blair, Fiona and family

## HEALTH PROTOCOL:

- \* Oranga Angus implements an 'industry best-practice', whole farm, animal health programme.
- \* TB-Herd status C10
- \* BVD- all bulls have been blood tested BVD antigen negative and been vaccinated with two shots of Hibrabovis. All bulls will require an annual Hibrabovis booster each September.
- \* IBR- all bull are vaccinated two shots for IBR (with Hibrabovis)
- \* 10-1 all bulls have received two shots 10-1
- \* Leptospirosis – all bulls have had two shots 3 way lept
- \* Our cattle run in conjunction with a large, high-performing Ewe flock.

## ATTENTION TO BUYER

Animal details included in this catalogue, including but not limited to pedigree, DNA information, Estimated Breeding Values (EBVs) and Index values, are based on information provided by the breeder or owner of the animal. Whilst all reasonable care has been taken to ensure that the information provided in this catalogue was correct at the time of publication, Angus Australia will assume no responsibility for the accuracy or completeness of the information, nor for the outcome (including consequential loss) of any action taken based on this information

## CONDITIONS OF SALE

- \* GST – All lots are sold exclusive of GST.
- \* Buyers Registration – A buyer's number will operate at the sale, therefore it will be necessary for all prospective purchasers to register prior to commencement of sale.
- \* Faults – While all care & responsibility has been taken by the vendor & NZ Farmers Livestock, no responsibility can be taken for any errors or omissions. All animals sold in an as is where is condition, and any perceived faults cannot be readdressed by the above parties.
- \* Insurance – All care will be taken with the cattle awaiting delivery but they become the responsibility of the purchaser at the fall of the hammer. Insurance strongly advised & representatives will be in attendance.
- \* Conditions – Sale will be conducted under usual conditions as set by New Zealand Stock and Station Agents.
- \* Inspection – Cattle available for inspection. Contact NZ Farmers Livestock or Vendors.

- \* Selling Order – Vendors reserve right to alter lot order. The highest bidder for any lot shall be the purchaser. Should any dispute arise, the dispute may be settled by the auctioneer at his option, or the lot may be put up again & re-sold.
- \* Rebate – 6% commission will be paid to all companies introducing purchasers prior to sale.
- \* OSH – Visitors are reminded of OSH regulations and are requested to take all care and responsibility for all actions while on the property.
- \* All bulls purchased must be uplifted on the day of the sale.

## PARENT VERIFICATION SUFFIXES

The animals listed within this catalogue including its pedigree, are displaying a Parent Verification Suffix which indicates the DNA parent verification status that has been conducted on the animal. The Parent Verification Suffixes that will appear at the end of each animal's name.

The suffix displayed at the end of each animal's name indicates the DNA parentage verification that has been conducted by Angus Australia.

**PV:** both parents have been verified by DNA.

**SV:** the sire has been verified by DNA.

**DV:** the dam has been verified by DNA.

**#:** DNA verification has not been conducted.

**E:** DNA verification has identified that the sire and/or dam may possibly be incorrect, but this cannot be confirmed conclusively.



Hunterville Veterinary Club Inc.

Email: [huntervillevetclub@xtra.co.nz](mailto:huntervillevetclub@xtra.co.nz) Phone: 06 3228 057 Fax: 06 3228 303

Address: 4 Bruce Street, Hunterville, 4730

5 August 2024

To whom it may concern

On 23<sup>rd</sup> July 2024, 66 Rising 1 year Angus Bulls belonging to Oranga Trust, C/- Blair McCarroll of 421 Makoura Road, Apiti were blood tested for Mycoplasma Bovis and BVD. They were also vaccinated for BVD and IBR (Hibrabovis3® Batch143N-1 Exp: 28/9/25).

The results of all blood tests were negative and the bulls tested are identified by NAIT Ear Tag numbers. The numbers are available on request.

Cosmin Susa BVSc,DVM,PGDipVCS

Handwritten signature of Cosmin Susa in blue ink, with the date '5.08.24' written next to it.

# UNDERSTANDING THE TRANSTASMAN ANGUS CATTLE EVALUATION (TACE)

## What is the TransTasman Angus Cattle Evaluation?

The TransTasman Angus Cattle Evaluation is the genetic evaluation program adopted by Angus Australia for Angus and Angus influenced beef cattle. The TransTasman Angus Cattle Evaluation uses Best Linear Unbiased Prediction (BLUP) technology to produce Estimated Breeding Values (EBVs) of recorded cattle for a range of important production traits (e.g. weight, carcass, fertility).

The TransTasman Angus Cattle Evaluation is an international genetic evaluation and includes pedigree, performance and genomic information from the Angus Australia and Angus New Zealand databases, along with selected information from the American and Canadian Angus Associations.

The TransTasman Angus Cattle Evaluation utilises a range of genetic evaluation software, including the internationally recognised BLUPF90 family of programs, and BREEDPLAN® beef genetic evaluation analytical software, as developed by the Animal Genetics and Breeding Unit (AGBU), a joint institute of NSW Agriculture and the University of New England, and Meat and Livestock Australia Limited (MLA).

## What is an EBV?

An animal's breeding value can be defined as its genetic merit for each trait. While it is not possible to determine an animal's true breeding value, it is possible to estimate it. These estimates of an animal's true breeding value are called EBVs (Estimated Breeding Values).

EBVs are expressed as the difference between an individual animal's genetics and a historical genetic level (i.e. group of animals) within the TACE genetic evaluation, and are reported in the units in which the measurements are taken.

## Using EBVs to Compare the Genetics of Two Animals

TACE EBVs can be used to estimate the expected difference in the genetics of two animals, with the expected difference equating to half the difference in the EBVs of the animals, all other things being equal (e.g. they are joined to the same animal/s).

For example, a bull with a 200 Day Growth EBV of +60 would be expected to produce progeny that are, on average, 10 kg heavier at 200 days of age than a bull with a 200 Day Growth EBV of +40 kg (i.e. 20 kg difference between the sire's EBVs, then halved as the sire only contributes half the genetics).

Or similarly, a bull with an IMF EBV of +3.0 would be expected to produce progeny with on average, 1% more intramuscular fat in a 400 kg carcass than a bull with an IMF EBV of +1.0 (i.e. 2% difference between the sire's EBVs, then halved as the sire only contributes half the genetics).

## Using EBVs to Benchmark an Animal's Genetics with the Breed

EBVs can also be used to benchmark an animal's genetics relative to the genetics of other Angus or Angus infused animals in Australia.

To benchmark an animal's genetics relative to other Angus animals, an animal's EBV can be compared to the EBV reference tables, which provide:

- the breed average EBV
- the percentile bands table

## Considering Accuracy

An accuracy value is published with each EBV, and is usually displayed as a percentage value immediately below the EBV.

The accuracy value provides an indication of the reliability of the EBV in estimating the animal's genetics (or true breeding value), and is an indication of the amount of information that has been used in the calculation of the EBV.

EBVs with accuracy values below 50% should be considered as preliminary or of low accuracy, 50-74% as of medium accuracy, 75-90% of medium to high accuracy, and 90% or greater as high accuracy.

## Description of TACE EBVs

EBVs are calculated for a range of traits within TACE, covering calving ease, growth, fertility, maternal performance, carcass merit, feed efficiency and structural soundness. A description of each EBV included in this publication is as follows:



CALVING EASE			
<b>CEDir</b>	%	Genetic differences in the ability of a sire's calves to be born unassisted from 2 year old heifers.	Higher EBVs indicate fewer calving difficulties in 2 year old heifers.
<b>CEDtrs</b>	%	Genetic differences in the ability of a sire's daughters to calve unassisted at 2 years of age.	Higher EBVs indicate fewer calving difficulties in 2 year old heifers.
<b>GL</b>	days	Genetic differences between animals in the length of time from the date of conception to the birth of the calf.	Lower EBVs indicate shorter gestation length.
<b>BW</b>	kg	Genetic differences between animals in calf weight at birth.	Lower EBVs indicate lighter birth weight.

GROWTH			
<b>200 Day</b>	kg	Genetic differences between animals in live weight at 200 days of age due to genetics for growth.	Higher EBVs indicate heavier live weight.
<b>400 Day</b>	kg	Genetic differences between animals in live weight at 400 days of age.	Higher EBVs indicate heavier live weight.
<b>600 Day</b>	kg	Genetic differences between animals in live weight at 600 days of age.	Higher EBVs indicate heavier live weight.
<b>MCW</b>	kg	Genetic differences between animals in live weight of cows at 5 years of age.	Higher EBVs indicate heavier mature weight.
<b>MILK</b>	kg	Genetic differences between animals in live weight at 200 days of age due to the maternal contribution of its dam.	Higher EBVs indicate heavier live weight.

FERTILITY			
<b>DC</b>	days	Genetic differences between animals in the time from the start of the joining period (i.e. when the female is introduced to a bull) until subsequent calving.	Lower EBVs indicate shorter time to calving.
<b>SS</b>	cm	Genetic differences between animals in scrotal circumference at 400 days of age.	Higher EBVs indicate larger scrotal circumference.

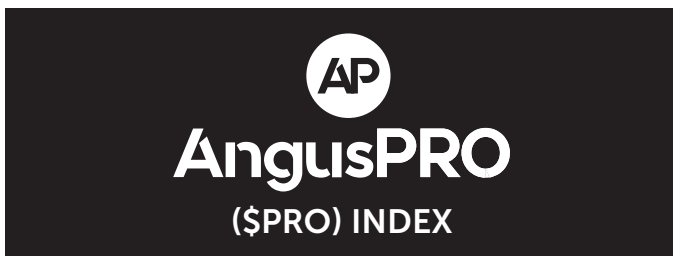
CARCASS			
<b>CWT</b>	kg	Genetic differences between animals in hot standard carcass weight at 750 days of age.	Higher EBVs indicate heavier carcass weight.
<b>EMA</b>	cm <sup>2</sup>	Genetic differences between animals in eye muscle area at the 12/13th rib site in a 400 kg carcass.	Higher EBVs indicate larger eye muscle area.
<b>RIB FAT</b>	mm	Genetic differences between animals in fat depth at the 12/13th rib site in a 400 kg carcass.	Higher EBVs indicate more fat.
<b>P8 (RUMP) FAT</b>	mm	Genetic differences between animals in fat depth at the P8 rump site in a 400 kg carcass.	Higher EBVs indicate more fat.
<b>RBV</b>	%	Genetic differences between animals in boned out saleable meat from a 400 kg carcass.	Higher EBVs indicate higher yield.
<b>IMF</b>	%	Genetic differences between animals in intramuscular fat (marbling) at the 12/13th rib site in a 400 kg carcass.	Higher EBVs indicate more intramuscular fat.

FEED/TEMPERAMENT			
<b>NFI-F</b>	kg/day	Genetic differences between animals in feed intake at a standard weight and rate of weight gain when animals are in a feedlot finishing phase.	Lower EBVs indicate more feed efficiency.
<b>Doc</b>	%	Genetic differences between animals in temperament.	Higher EBVs indicate better temperament.



STRUCTURE			
<b>CLAW SET</b>	score	Genetic differences in claw set structure (shape and evenness of claws).	Lower EBVs indicate more desirable claw structure.
<b>FOOT ANGLE</b>	score	Genetic differences in foot angle (strength of pastern, depth of heel).	Lower EBVs indicate more desirable foot angle.
<b>LEG ANGLE</b>	score	Genetic differences in rear leg structure when viewed from the side (angle at front of the hock).	Lower EBVs indicate more desirable leg angle (straighter angle through the hock joint).

SELECTION INDEXES			
<b>\$A</b>	\$	Genetic differences between animals in net profitability per cow joined in a typical commercial self replacing herd using Angus bulls. This selection index is not specific to a particular market end-point, but identifies animals that will improve overall net profitability in the majority of commercial, self replacing, grass and grain finishing beef production systems.	Higher selection indexes indicate greater profitability.



“A feature of the \$PRO index is a selection advantage of close to 0 for mature cow weight, meaning that selection on this index will maintain mature cow weight, while still increasing growth to 200, 400 & 600 days of age.”

ANGUS AUSTRALIA

The AngusPRO index (\$PRO) estimates the genetic differences between animals in net profitability per cow joined in a commercial self replacing herd based in New Zealand that targets the production of grass finished steers for the AngusPure programme.

Daughters are retained for breeding and therefore female traits are of importance.

Steers are assumed marketed at approximately 530 kg live weight (290 kg carcase weight with 10 mm P8 fat depth) at 20 months of age, with a significant premium for steers that exhibit superior marbling.

**SELECTION INDEX SUMMARY**

- New Zealand production system.
- Self replacing herd.
- Daughters are retained for breeding.
- Steer progeny are finished on pasture for the AngusPure programme.
- Steer progeny slaughtered at a carcase weight of 290 kg at 20 months of age.
- Significant premium for steers that exhibit superior marbling.

## PRIVACY INFORMATION

In order for Angus Australia to process the transfer of a registered animal in this catalogue, the vendor will need to provide certain information to Angus Australia and the buyer consents to the collection and disclosure of that information by Angus Australia in certain circumstances. If the buyer does not wish for his or her information to be stored and disclosed by Angus Australia, the buyer must complete the form included below and forward it to Angus Australia. If the form is not completed, the buyer will be taken to have consented to the disclosure of such information.

## Trait Contributions

Figure 1 shows the traits that are considered in the \$PRO index, and how much they contribute to the overall balance of the selection index. The larger the segment, the greater the impact on the selection index.

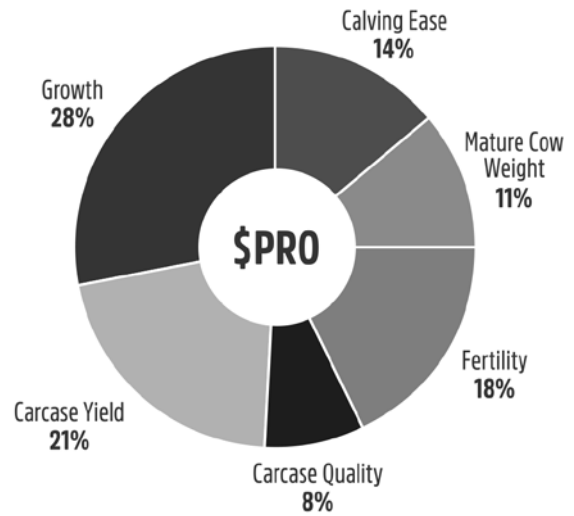


FIGURE 1: Trait Contribution to the AngusPro (\$PRO) Index

## Selection Advantage

Figure 2 shows the selection advantage if animals are selected using the \$PRO index.

The selection advantage is calculated by ranking well used sires within the Angus breed on the \$PRO index, and comparing the average EBVs of the sires in the highest 10% with the average EBVs of all sires from which they were selected. For example, the sires ranked in the highest 10% based on the \$PRO index had 9 kg higher 400 Day Weight EBVs and 1.2 kg lower Birth Weight EBVs than the average EBVs of the sires from which they were selected.

The selection advantage is indicative of the long term direction and relativity of response that will occur in individual traits if selection is based on the \$PRO index. The actual response that is observed will vary depending on the features of the individual breeding program.

A feature of the \$PRO index is a selection advantage of close to 0 for mature cow weight, meaning that selection on this index will maintain mature cow weight, while still increasing growth to 200, 400 & 600 days of age.

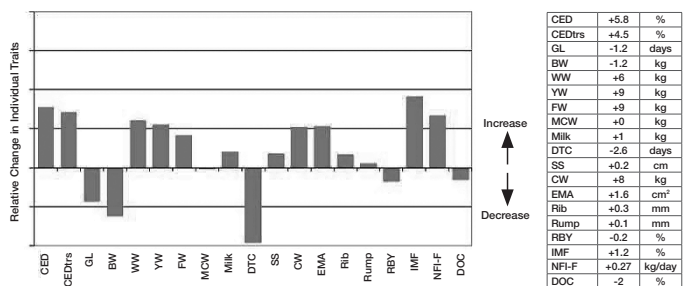


FIGURE 2: Selection Advantage for the AngusPRO (\$PRO) index

## DISCLAIMER:

The BREEDPLAN Estimated Breeding Values (EBVs) contained within this sale catalogue were compiled by the Agricultural Business Research Institute (ABRI) from the data supplied by breeders. Neither the Angus Australia nor ABRI oversee or audit the collection of this data.

# TRANSTASMAN ANGUS CATTLE EVALUATION - SEPTEMBER 2024 REFERENCE TABLES



BREED AVERAGE EBVs																															
Calving Ease				Birth				Growth				Fertility				Carcase				Other				Structure				Selection Indexes			
CEDir	CEBdrs	GL	BW	200	400	600	MCW	Milk	SS	DTC	CWT	EMA	RIB	P8	RBV	IMF	NFLF	DOC	Claw	Angle	Leg	SA	SA-L								
+1.8	+2.7	-4.4	+4.0	+51	+92	+119	+102	+17	+2.2	-4.7	+67	+6.4	+0.0	-0.3	+0.5	+2.3	+0.22	+20	+0.84	+0.97	+1.02	+200	+344								
<b>Brd Avg</b>																															

\* Breed average represents the average EBV of all 2022 drop Australian Angus and Angus-influenced seedstock animals analysed in the September 2024 TransTasman Angus Cattle Evaluation .

PERCENTILE BANDS TABLE																																										
% Band	Calving Ease			Birth			Growth			Fertility			Carcase			Other			Structure			Selection Indexes																				
	Less	More	Difficulty	Lighter	Heavier	Weight	200	400	600	MCW	Milk	SS	DTC	CWT	EMA	RIB	P8	Higher	Less	IMF	Greater	Efficiency	DOC	Claw	Angle	Leg	SA	SA-L														
1%	+10.1	+9.9	+9.9	-10.4	-0.4	+71	+124	+164	+167	+29	+5.1	-8.9	+101	+14.9	+4.5	+5.5	+2.1	+6.1	-0.65	+45	+0.42	+0.60	+0.72	+278	+455																	
5%	+8.3	+8.3	+8.3	-8.6	+1.0	+65	+114	+150	+145	+25	+4.1	-7.5	+90	+12.2	+3.1	+3.6	+1.6	+4.9	-0.38	+37	+0.54	+0.70	+0.82	+257	+424																	
10%	+7.2	+7.3	+7.3	-7.6	+1.7	+61	+109	+142	+135	+23	+3.6	-6.9	+85	+10.8	+2.3	+2.7	+1.3	+4.3	-0.24	+33	+0.60	+0.76	+0.86	+245	+408																	
15%	+6.4	+6.6	+6.6	-7.0	+2.2	+59	+105	+137	+128	+22	+3.3	-6.4	+81	+9.9	+1.8	+2.0	+1.2	+3.9	-0.15	+30	+0.64	+0.80	+0.90	+237	+397																	
20%	+5.7	+6.0	+6.0	-6.5	+2.5	+58	+103	+134	+123	+21	+3.3	-6.1	+79	+9.2	+1.4	+1.5	+1.0	+3.6	-0.08	+28	+0.68	+0.82	+0.92	+231	+388																	
25%	+5.1	+5.4	+5.4	-6.1	+2.8	+56	+101	+131	+118	+20	+2.9	-5.8	+76	+8.6	+1.1	+1.2	+0.9	+3.3	-0.02	+27	+0.72	+0.86	+0.94	+225	+380																	
30%	+4.5	+4.9	+4.9	-5.7	+3.1	+55	+99	+128	+114	+19	+2.7	-5.5	+74	+8.1	+0.9	+0.8	+0.8	+3.0	+0.03	+25	+0.74	+0.88	+0.96	+220	+373																	
35%	+4.0	+4.5	+4.5	-5.4	+3.3	+54	+97	+126	+111	+19	+2.6	-5.3	+73	+7.6	+0.6	+0.5	+0.7	+2.8	+0.08	+24	+0.76	+0.90	+0.98	+215	+367																	
40%	+3.4	+4.0	+4.0	-5.0	+3.6	+53	+95	+123	+108	+18	+2.4	-5.1	+71	+7.2	+0.4	+0.2	+0.7	+2.6	+0.12	+23	+0.78	+0.92	+0.98	+211	+361																	
45%	+2.9	+3.6	+3.6	-4.7	+3.8	+52	+93	+121	+104	+18	+2.3	-4.9	+69	+6.7	+0.2	-0.1	+0.6	+2.4	+0.17	+21	+0.80	+0.94	+1.00	+207	+355																	
50%	+2.4	+3.1	+3.1	-4.4	+4.0	+51	+92	+119	+101	+17	+2.1	-4.6	+68	+6.3	+0.0	-0.3	+0.5	+2.2	+0.21	+20	+0.84	+0.96	+1.02	+203	+349																	
55%	+1.8	+2.7	+2.7	-4.1	+4.2	+50	+90	+116	+98	+16	+2.0	-4.5	+66	+5.9	-0.2	-0.6	+0.4	+2.0	+0.26	+19	+0.86	+0.98	+1.04	+198	+342																	
60%	+1.2	+2.2	+2.2	-3.8	+4.4	+49	+89	+114	+95	+16	+1.9	-4.2	+64	+5.5	-0.5	-0.9	+0.3	+1.8	+0.30	+18	+0.88	+1.00	+1.06	+194	+336																	
65%	+0.6	+1.7	+1.7	-3.5	+4.6	+48	+87	+112	+92	+15	+1.7	-4.0	+62	+5.1	-0.7	-1.2	+0.2	+1.7	+0.35	+17	+0.90	+1.02	+1.06	+189	+329																	
70%	-0.1	+1.1	+1.1	-3.1	+4.9	+47	+85	+109	+89	+14	+1.6	-3.8	+61	+4.7	-0.9	-1.5	+0.2	+1.5	+0.40	+15	+0.94	+1.04	+1.08	+184	+322																	
75%	-0.9	+0.5	+0.5	-2.8	+5.1	+45	+83	+107	+85	+14	+1.4	-3.6	+59	+4.2	-1.2	-1.8	+0.1	+1.3	+0.45	+14	+0.96	+1.08	+1.10	+178	+313																	
80%	-1.8	-0.2	-0.2	-2.4	+5.4	+44	+81	+104	+81	+13	+1.3	-3.3	+56	+3.7	-1.4	-2.2	-0.1	+1.1	+0.52	+13	+1.00	+1.10	+1.12	+171	+304																	
85%	-2.9	-1.2	-1.2	-1.9	+5.8	+42	+78	+100	+76	+12	+1.1	-2.9	+54	+3.0	-1.8	-2.6	-0.2	+0.8	+0.59	+11	+1.04	+1.14	+1.16	+163	+291																	
90%	-4.5	-2.4	-2.4	-1.2	+6.2	+40	+75	+95	+70	+11	+0.8	-2.5	+50	+2.2	-2.2	-3.2	-0.4	+0.5	+0.69	+9	+1.08	+1.18	+1.18	+152	+276																	
95%	-7.0	-4.4	-4.4	-0.2	+6.9	+37	+70	+88	+60	+9	+0.4	-1.7	+45	+0.9	-2.9	-4.2	-0.7	+0.0	+0.85	+5	+1.16	+1.24	+1.24	+136	+250																	
99%	-12.5	-8.8	-8.8	+1.8	+8.4	+30	+60	+74	+40	+5	-0.5	-0.2	+34	-1.6	-4.3	-6.0	-1.2	-0.9	+1.14	-1	+1.30	+1.38	+1.32	+106	+202																	
	More	Calving	Difficulty	Longer	Heavier	Weight	Lighter	Weight	Lighter	Weight	Smaller	Scrotal	Size	Longer	Time to	Calving	Lighter	Carcase	Weight	Smaller	EMA	Less	Fat	Less	Fat	Lower	Yield	Less	IMF	Lower	Feed	Efficiency	Less	Docile	Higher	Score	Higher	Score	Higher	Score	Lower	Profitability

\* The percentile bands represent the distribution of EBVs across the 2022 drop Australian Angus and Angus-influenced seedstock animals analysed in the September 2024 TransTasman Angus Cattle Evaluation .

# REFERENCE SIRES

<b>REF SIRE</b>	<b>HALLMARK STIRLING Q016</b> <sup>SV</sup>	REG: HBR	DOB: 12/08/2019	ID#: NZE21224019Q016																
THOMAS UP RIVER 1614 <sup>PV</sup>		STOKMAN BANDO 9155 #		<b>Genetic Conditions:</b> AMF,CAF,DDF,NHF,DWF,MA F,MHF,OHF,OSF,RGF <b>Traits Observed:</b> GL,CE,BWT,600WT,SC,Scan(E MA,Rib,Rump,IMF),Genomics																
<b>SIRE:</b>	<b>MILLAH MURRAH LOCH UP L133</b> <sup>PV</sup>	<b>DAM:</b>	<b>HEATHER DELL L37</b> #																	
MILLAH MURRAH BRENDA H49 <sup>SV</sup>		HEATHER DELL 1034 #																		
SEPTEMBER 2024 TRANSTASMAN ANGUS CATTLE EVALUATION																		INDEXES		
CE DIR	CE DTRS	GL	BW	200	400	600	MCW	Milk	SS	DTC	CWT	EMA	RIB	RUMP	RBY	IMF	NFI-F	DOC	\$A	\$PRO
+10.2	+6.6	-9.7	+1.4	+46	+88	+113	+100	+19	+1.8	-5.2	+56	+3.9	+2.1	+1.5	-0.6	+2.8	+0.44	+30	\$192	\$153
67%	60%	94%	95%	93%	92%	91%	86%	78%	91%	54%	80%	80%	80%	81%	75%	81%	68%	84%		
NOTES:																		<b>A+</b>		

<b>REF SIRE</b>	<b>KAKAHU 20124</b> <sup>PV</sup>	REG: HBR	DOB: 31/08/2020	ID#: NZE13300020124																
EF COMPLEMENT 8088 <sup>PV</sup>		KAKAHU 16068 <sup>PV</sup>		<b>Genetic Conditions:</b> AMFU,CAFU,DDFU,NHFU Traits Observed: BWT,200WT,400WT,SC,Scan(E MA,Rib,Rump,IMF),DOC,Genomics																
<b>SIRE:</b>	<b>KAKAHU PEPPER 18046</b> <sup>PV</sup>	<b>DAM:</b>	<b>KAKAHU 18496</b> <sup>SV</sup>																	
KAKAHU 16410 <sup>SV</sup>		KAKAHU L FD 12368 #																		
SEPTEMBER 2024 TRANSTASMAN ANGUS CATTLE EVALUATION																		INDEXES		
CE DIR	CE DTRS	GL	BW	200	400	600	MCW	Milk	SS	DTC	CWT	EMA	RIB	RUMP	RBY	IMF	NFI-F	DOC	\$A	\$PRO
+5.6	+8.4	-6.8	+2.3	+33	+61	+85	+30	+22	-0.5	-2.2	+56	+10.9	-0.9	-2.5	+1.2	+2.6	+0.83	+30	\$188	\$112
70%	57%	82%	92%	90%	89%	87%	82%	75%	79%	43%	76%	69%	69%	71%	59%	74%	62%	85%		
NOTES:																				

<b>REF SIRE</b>	<b>PINEBANK 135Q</b> <sup>SV</sup>	REG: HBR	DOB: 26/09/2019	ID#: NZE11990019Q135																
PINEBANK 99/10 #		PINEBANK 23/13 #		<b>Genetic Conditions:</b> AMF,CAF,DDF,NHF Traits Observed: BWT,200WT,400WT,SC,Scan(E MA,Rib,Rump,IMF),Genomics																
<b>SIRE:</b>	<b>GLANWORTH WAIGROUP 1213</b> #	<b>DAM:</b>	<b>PINEBANK 154/16</b> #																	
GLANWORTH WAIGROUP 10161 #		PINEBANK 66/12 #																		
SEPTEMBER 2024 TRANSTASMAN ANGUS CATTLE EVALUATION																		INDEXES		
CE DIR	CE DTRS	GL	BW	200	400	600	MCW	Milk	SS	DTC	CWT	EMA	RIB	RUMP	RBY	IMF	NFI-F	DOC	\$A	\$PRO
+7.1	+1.2	-3.6	+2.7	+40	+84	+105	+52	+19	+1.5	-3.4	+55	+2.4	+4.3	+5.1	-0.2	+0.4	-0.09	+45	\$184	\$133
76%	63%	83%	92%	89%	89%	88%	85%	78%	87%	54%	80%	79%	80%	80%	74%	81%	69%	79%		
NOTES:																		<b>A</b>		

<b>REF SIRE</b>	<b>PINEBANK P06</b> <sup>SV</sup>	REG: HBR	DOB: 24/08/2018	ID#: NZE11990018P06																
MATAURI REALITY 839 #		PINEBANK 89/05 #		<b>Genetic Conditions:</b> AMFU,CA2%,DDFU,NHFU Traits Observed: BWT,200WT,400WT,SC,Scan(E MA,Rib,Rump,IMF),Genomics																
<b>SIRE:</b>	<b>MATAURI CRIKEY G244</b> #	<b>DAM:</b>	<b>PINEBANK 230/16</b> #																	
MATAURI 109969 #		PINEBANK 24/07 #																		
SEPTEMBER 2024 TRANSTASMAN ANGUS CATTLE EVALUATION																		INDEXES		
CE DIR	CE DTRS	GL	BW	200	400	600	MCW	Milk	SS	DTC	CWT	EMA	RIB	RUMP	RBY	IMF	NFI-F	DOC	\$A	\$PRO
+7.0	+6.2	-3.2	+2.6	+29	+56	+74	+55	+17	+1.8	-4.6	+25	+4.1	+3.5	+4.7	-0.2	+3.0	+0.4	+17	\$164	\$124
72%	58%	83%	93%	91%	91%	90%	86%	79%	79%	47%	78%	69%	71%	71%	63%	73%	61%	83%		
NOTES:																		<b>A</b>		

<b>REF SIRE</b>	<b>TAIMATE R177</b> <sup>SV</sup>	REG: HBR	DOB: 18/08/2020	ID#: NZE12865020R177																
TAIMATE LANDSLIDE L77 #		TAIMATE LAZARUS L12 <sup>SV</sup>		<b>Genetic Conditions:</b> AMF,CAF,DDF,NHF,DWF,MA F,MHF,OHF,OSF,RGF <b>Traits Observed:</b> BWT,200WT(x2),400WT,600 WT,SC,Scan(EMA,Rib,Rump,IMF),DOC,Genomics																
<b>SIRE:</b>	<b>TAIMATE P52</b> #	<b>DAM:</b>	<b>TAIMATE N 48</b> #																	
TAIMATE 1523 #		TAIMATE 1435 #																		
SEPTEMBER 2024 TRANSTASMAN ANGUS CATTLE EVALUATION																		INDEXES		
CE DIR	CE DTRS	GL	BW	200	400	600	MCW	Milk	SS	DTC	CWT	EMA	RIB	RUMP	RBY	IMF	NFI-F	DOC	\$A	\$PRO
+6.3	+3.5	-4.9	+2.6	+35	+70	+91	+91	+19	+2.2	-3.9	+27	+9.9	+2.0	+1.7	+1.0	+2.4	+0.74	+28	\$172	\$124
67%	54%	81%	86%	86%	84%	84%	80%	73%	78%	42%	73%	69%	70%	70%	62%	73%	60%	79%		
NOTES:																		<b>A</b>		

ANGUS AUSTRALIA BREED AVG. EBVS FOR 2022 BORN CALVES																		INDEXES (\$)		
CE DIR	CE DTRS	GL	BW	200	400	600	MCW	Milk	SS	DTC	CWT	EMA	RIB	RUMP	RBY	IMF	NFI-F	DOC	\$A	\$PRO
+1.8	+2.7	-4.4	+4.0	+51	+92	+119	+102	+17	+2.2	-4.7	+67	+6.4	+0.0	-0.3	+0.5	+2.3	+0.22	+20	+\$200	+\$149

# REFERENCE SIRES

<b>REF SIRE</b>	<b>TAIMATE ROY R38</b> <sup>PV</sup>	<b>REG:</b> HBR	<b>DOB:</b> 29/07/2020	<b>ID#:</b> NZE12865020R38	<b>TACE</b>
	KAHARAU COBRA 10-546 #	MATAURI REALITY 839 #		<b>Genetic Conditions:</b> AMF,CAF,DDF,NHF,DWF,MAF,MHF,OHF,OSF,RGF	
<b>SIRE:</b>	<b>TAIMATE L38</b> #	<b>DAM:</b>	<b>TAIMATE 1506</b> #	<b>Traits Observed:</b> BWT,200WT(x2),400WT,600WT,SC,Scan(EMA,Rib,Rump,IMF),DOC,Genomics	
	TAIMATE 807 #		TAIMATE 1363 #		

SEPTEMBER 2024 TRANSTASMAN ANGUS CATTLE EVALUATION																		INDEXES		
CE DIR	CE DTRS	GL	BW	200	400	600	MCW	Milk	SS	DTC	CWT	EMA	RIB	RUMP	RBY	IMF	NFI-F	DOC	\$A	\$PRO
+4.1	+3.9	-5.5	+2.7	+56	+92	+125	+116	+13	+3.9	-3.9	+60	+6.4	+1.6	+0.7	+0.7	+0.0	+0.54	+32	\$186	\$145
84%	64%	98%	98%	98%	95%	90%	86%	78%	91%	51%	81%	79%	80%	80%	74%	80%	66%	95%		

**NOTES:** Feature Sire. We had the privilege to purchase semen of Roy. His physical phenotype, width and depth of body, low birth, Calving ease and very good growth fit well into our program.

<b>REF SIRE</b>	<b>WOODHILL AUTHENTIC</b> <sup>PV</sup>	<b>REG:</b> HBR	<b>DOB:</b> 18/02/2019	<b>ID#:</b> USA19541556	<b>TACE</b>
	KM BROKEN BOW 002 <sup>PV</sup>	HOOVER DAM #		<b>Genetic Conditions:</b> AMF,CAF,DDF,NHF,DWF,MAF,MHF,OHF,OSF,RGF	
<b>SIRE:</b>	<b>SPRING COVE RENO 4021</b> #	<b>DAM:</b>	<b>WOODHILL EVERGREEN U181-A130</b> #	<b>Traits Observed:</b> Genomics	
	SPRING COVE LIZA 021 #		WOODHILL EVERGREEN R53-U181 #		

SEPTEMBER 2024 TRANSTASMAN ANGUS CATTLE EVALUATION																		INDEXES		
CE DIR	CE DTRS	GL	BW	200	400	600	MCW	Milk	SS	DTC	CWT	EMA	RIB	RUMP	RBY	IMF	NFI-F	DOC	\$A	\$PRO
+7.6	+7.5	-6.6	+3.3	+74	+125	+158	+137	+22	+1.9	-1.7	+93	+10.9	-4.9	-6.4	+1.0	+1.9	-0.89	+33	\$246	\$169
72%	56%	94%	95%	93%	90%	87%	84%	79%	83%	42%	81%	77%	74%	72%	66%	79%	60%	81%		

**NOTES:** Feature Sire. We had the privilege to purchase semen of Authentic. Hard to find a more complete balanced bull. From Top 8% calving ease, moderate birth to Top 1% growth +33 Docility Top 4% carcass weight Big EMA IMF. A deep-sided, wide base bull. Top 4% Angus Breeding low feed cost index

ANGUS AUSTRALIA BREED AVG. EBVS FOR 2022 BORN CALVES																		INDEXES (\$)		
CE DIR	CE DTRS	GL	BW	200	400	600	MCW	Milk	SS	DTC	CWT	EMA	RIB	RUMP	RBY	IMF	NFI-F	DOC	\$A	\$PRO
+1.8	+2.7	-4.4	+4.0	+51	+92	+119	+102	+17	+2.2	-4.7	+67	+6.4	+0.0	-0.3	+0.5	+2.3	+0.22	+20	+\$200	+\$149

## ANGUS HeiferSELECT

**AN ADVANCED GENOMIC TOOL TO INFORM THE SELECTION OF REPLACEMENT HEIFERS FOR COMMERCIAL AUSTRALIAN ANGUS BREEDERS**

A product of Angus Australia, developed with CSIRO and delivered in collaboration with Zoetis and Neogen.

This was created as a result of a collaboration between Angus Australia and Meat & Livestock Australia Donor Company (MDC) (Project P.PSH.1063).

Scan for more info.

# DICKIEDIRECT

## FERTILISER

25 Railway Rd, Whakatu, Hastings 4172, New Zealand

☎ 0800 4 DICKIE (0800 43 42 54)


✉ zara@dickiedirect.co.nz


🌐 dickiedirect.co.nz


Improving the Production, Profitability & Environment Sustainability of New Zealand farms





# YEARLING BULLS

<b>LOT 1</b>	<b>ORANGA U014</b> <sup>SV</sup>	REG: APR	DOB: 08/09/2023	Mating: AI	ID#: ORA23U014						
<b>SEPTEMBER 2024 TRANSTASMAN ANGUS CATTLE EVALUATION</b>											
CE DIR	CE DTRS	GL	BW	200	400	600	MCW	Milk	SS	DTC	<b>SIRE:</b> TAIMATE L38 # <b>TAIMATE ROY R38</b> <sup>PV</sup> TAIMATE 1506 # NGAPUTAHI K166 # <b>DAM:</b> ORANGA 75 # UNKNOWN
+1.3	+4.9	-3.3	+3.5	+54	+97	+130	+127	+11	+2.8	-4.1	
66%	53%	83%	82%	83%	81%	80%	77%	72%	78%	39%	
CWT	EMA	RIB	RUMP	RBY	IMF	NFI-I	DOC	 TACE <small>Transtasman Angus Cattle Evaluation</small>	<b>INDEXES (\$)</b>		
+65	+2.4	-0.3	-1.0	+1.2	-1.0	+0.1	+32		\$A	\$PRO	
68%	67%	68%	68%	60%	72%	59%	76%		\$165	\$128	
<b>NOTES:</b> Fantastic bull to kick off sale. Moderate birth with a lot of growth. Son of Roy out of a very good sound cow 5/5 calvings. Beautiful Phenotype. Top Bull Genomics Done						<b>A</b>	<b>Actual Birth Weight:</b> 38kgs <b>Dam's age:</b> 75/17 <b>Genetic Conditions:</b> AMF,CAF,DDF,NHF <b>Traits Observed:</b> GL,BWT,200WT,400WT,DOC,Genomics				
Purchaser: _____ \$: _____											

<b>LOT 2</b>	<b>ORANGA U011</b> <sup>SV</sup>	REG: APR	DOB: 07/09/2023	Mating: AI	ID#: ORA23U011						
<b>SEPTEMBER 2024 TRANSTASMAN ANGUS CATTLE EVALUATION</b>											
CE DIR	CE DTRS	GL	BW	200	400	600	MCW	Milk	SS	DTC	<b>SIRE:</b> TAIMATE L38 # <b>TAIMATE ROY R38</b> <sup>PV</sup> TAIMATE 1506 # PINEBANK 27/13 # <b>DAM:</b> ORANGA 47 # UNKNOWN
+3.2	+6.9	-6.1	+3.0	+45	+83	+108	+88	+11	+0.9	-2.9	
66%	52%	82%	81%	82%	80%	79%	76%	71%	77%	39%	
CWT	EMA	RIB	RUMP	RBY	IMF	NFI-I	DOC	 TACE <small>Transtasman Angus Cattle Evaluation</small>	<b>INDEXES (\$)</b>		
+49	-3.1	+2.0	+1.2	-0.1	+0.0	-0.4	+18		\$A	\$PRO	
67%	66%	67%	67%	59%	71%	58%	74%		\$142	\$99	
<b>NOTES:</b> Very nice bull, moderate birth, calving ease and good growth. Son of Roy out of a good cow 5/5 calvings. Nice Phenotype again. Genomics done.						<b>A</b>	<b>Actual Birth Weight:</b> 35kgs <b>Dam's age:</b> 47/17 <b>Genetic Conditions:</b> AMF,CAF,DDF,NHF <b>Traits Observed:</b> GL,BWT,200WT,400WT,DOC,Genomics				
Purchaser: _____ \$: _____											

<b>LOT 3</b>	<b>ORANGA U027</b> <sup>SV</sup>	REG: APR	DOB: 09/09/2023	Mating: AI	ID#: ORA23U027						
<b>SEPTEMBER 2024 TRANSTASMAN ANGUS CATTLE EVALUATION</b>											
CE DIR	CE DTRS	GL	BW	200	400	600	MCW	Milk	SS	DTC	<b>SIRE:</b> TAIMATE L38 # <b>TAIMATE ROY R38</b> <sup>PV</sup> TAIMATE 1506 # NGAPUTAHI K166 # <b>DAM:</b> ORANGA 61 # UNKNOWN
+5.2	+5.9	-6.4	+1.1	+33	+62	+72	+64	+9	+0.3	-4.1	
66%	52%	83%	82%	83%	80%	80%	77%	72%	78%	39%	
CWT	EMA	RIB	RUMP	RBY	IMF	NFI-I	DOC	 TACE <small>Transtasman Angus Cattle Evaluation</small>	<b>INDEXES (\$)</b>		
+27	+5.8	+5.0	+6.2	+0.3	+0.4	+0.7	+29		\$A	\$PRO	
68%	67%	68%	68%	60%	72%	59%	76%		\$160	\$125	
<b>NOTES:</b> Another nice Roy, low birth, good calving ease and moderate growth. High fats, good Docility out of good cow 5/5. Very good heifer mating option. Genomics done.						<b>A</b>	<b>Actual Birth Weight:</b> 36kgs <b>Dam's age:</b> 61/17 <b>Genetic Conditions:</b> AM3%,CA3%,DD4%,NH3% <b>Traits Observed:</b> GL,BWT,200WT,400WT,DOC,Genomics				
Purchaser: _____ \$: _____											

<b>LOT 4</b>	<b>ORANGA U046</b> <sup>SV</sup>	REG: APR	DOB: 10/09/2023	Mating: AI	ID#: ORA23U046						
<b>SEPTEMBER 2024 TRANSTASMAN ANGUS CATTLE EVALUATION</b>											
CE DIR	CE DTRS	GL	BW	200	400	600	MCW	Milk	SS	DTC	<b>SIRE:</b> TAIMATE L38 # <b>TAIMATE ROY R38</b> <sup>PV</sup> TAIMATE 1506 # UNKNOWN <b>DAM:</b> ORANGA 43 # UNKNOWN
+6.6	+0.2	-4.2	+0.6	+33	+64	+84	+76	+14	-0.3	-4.7	
65%	50%	83%	82%	82%	80%	80%	76%	71%	77%	37%	
CWT	EMA	RIB	RUMP	RBY	IMF	NFI-I	DOC	 TACE <small>Transtasman Angus Cattle Evaluation</small>	<b>INDEXES (\$)</b>		
+45	+4.0	+4.8	+4.1	+0.8	+0.9	+0.4	+41		\$A	\$PRO	
67%	66%	66%	67%	58%	71%	57%	75%		\$162	\$122	
<b>NOTES:</b> Another very nice Roy. Very low birth, good calving ease, direct moderate growth. High fats, very Docile +41 nice Phenotype out of a very good old cow 10yr. Genomics done.						<b>A</b>	<b>Actual Birth Weight:</b> 32kgs <b>Dam's age:</b> 43/14 <b>Genetic Conditions:</b> AMF,CAF,DDF,NHF <b>Traits Observed:</b> GL,BWT,200WT,400WT,DOC,Genomics				
Purchaser: _____ \$: _____											

<b>LOT 5</b>	<b>ORANGA U005</b> #	REG: APR	DOB: 06/09/2023	Mating: AI	ID#: ORA23U005						
<b>SEPTEMBER 2024 TRANSTASMAN ANGUS CATTLE EVALUATION</b>											
CE DIR	CE DTRS	GL	BW	200	400	600	MCW	Milk	SS	DTC	<b>SIRE:</b> TAIMATE L38 # <b>TAIMATE ROY R38</b> <sup>PV</sup> TAIMATE 1506 # UNKNOWN <b>DAM:</b> ORANGA 10 # UNKNOWN
+7.3	+5.6	-5.1	+0.6	+36	+67	+91	+74	+11	+1.4	-2.2	
53%	40%	81%	72%	68%	68%	64%	59%	56%	56%	29%	
CWT	EMA	RIB	RUMP	RBY	IMF	NFI-I	DOC	 TACE <small>Transtasman Angus Cattle Evaluation</small>	<b>INDEXES (\$)</b>		
+47	+4.0	+2.8	+1.7	+0.6	+0.9	+0.6	+19		\$A	\$PRO	
54%	49%	51%	51%	45%	52%	41%	59%		\$144	\$104	
<b>NOTES:</b> Another nice Roy. Very low birth, good calving ease, moderate growth and good fats. Top heifer mating option.						<b>A</b>	<b>Actual Birth Weight:</b> 30kgs <b>Dam's age:</b> 10/13 <b>Genetic Conditions:</b> AM6%,CA6%,DD6%,NH6% <b>Traits Observed:</b> GL,BWT,200WT,400WT,DOC				
Purchaser: _____ \$: _____											

ANGUS AUSTRALIA BREED AVG. EBVS FOR 2022 BORN CALVES																	INDEXES (\$)			
CE DIR	CE DTRS	GL	BW	200	400	600	MCW	Milk	SS	DTC	CWT	EMA	RIB	RUMP	RBY	IMF	NFI-F	DOC	\$A	\$PRO
+1.8	+2.7	-4.4	+4.0	+51	+92	+119	+102	+17	+2.2	-4.7	+67	+6.4	+0.0	-0.3	+0.5	+2.3	+0.22	+20	+\$200	+\$149

# YEARLING BULLS

<b>LOT 6</b>	<b>ORANGA U029<sup>SV</sup></b>	<b>REG:</b> APR	<b>DOB:</b> 09/09/2023	<b>Mating:</b> AI	<b>ID#:</b> ORA23U029							
SEPTEMBER 2024 TRANSTASMAN ANGUS CATTLE EVALUATION											TAIMATE L38 #	
CE DIR	CE DTRS	GL	BW	200	400	600	MCW	Milk	SS	DTC	<b>SIRE:</b> TAIMATE ROY R38 <sup>PV</sup>	TAIMATE 1506 #
+4.9	+1.5	-5.3	+1.3	+28	+57	+68	+33	+14	+0.8	-5.3		NGAPUTAHI K166 #
65%	51%	83%	81%	82%	80%	80%	77%	72%	77%	38%		<b>DAM:</b> ORANGA 66 #
CWT	EMA	RIB	RUMP	RBY	IMF	NFI-I	DOC	TACE	INDEXES (\$)		Actual Birth Weight: 37kgs	
+35	+9.0	+4.0	+4.3	+1.3	+0.2	+0.8	+22		\$A	\$PRO	Dam's age: 66/17	
68%	66%	67%	68%	59%	71%	58%	75%		\$183	\$138	Genetic Conditions: AMF,CAF,DDF,NHF	
<b>NOTES:</b> Low birth Roy with added grunt here. Good calving ease direct. Docility. High EMA big fats out of a good sound cow 5/5. Genomics done											<b>Traits Observed:</b> GL,BWT,200WT,400WT,DOC,Genomics	
Purchaser											\$:	



<b>LOT 7</b>	<b>ORANGA U035<sup>SV</sup></b>	<b>REG:</b> APR	<b>DOB:</b> 10/09/2023	<b>Mating:</b> AI	<b>ID#:</b> ORA23U035							
SEPTEMBER 2024 TRANSTASMAN ANGUS CATTLE EVALUATION											TAIMATE L38 #	
CE DIR	CE DTRS	GL	BW	200	400	600	MCW	Milk	SS	DTC	<b>SIRE:</b> TAIMATE ROY R38 <sup>PV</sup>	TAIMATE 1506 #
+8.9	+5.4	-3.4	+0.9	+41	+79	+98	+62	+17	+1.7	-1.5		UNKNOWN
65%	51%	83%	82%	82%	80%	80%	76%	72%	76%	37%		<b>DAM:</b> ORANGA 106 #
CWT	EMA	RIB	RUMP	RBY	IMF	NFI-I	DOC	TACE	INDEXES (\$)		Actual Birth Weight: 35kgs	
+56	+0.4	+2.9	+3.1	-0.4	+1.9	+0.6	+16		\$A	\$PRO	Dam's age: 106/11	
68%	66%	66%	67%	58%	71%	57%	74%		\$162	\$110	Genetic Conditions: AM6%,CA6%,DD6%,NH6%	
<b>NOTES:</b> Another low birth Roy with added Grunt. Top 4% calving ease direct. Good growth, great bodied bull out of good old cow 12yr. Heifer mating option. Genomics done.											<b>Traits Observed:</b> GL,BWT,200WT,400WT,DOC,Genomics	
Purchaser											\$:	

<b>LOT 8</b>	<b>ORANGA U055 #</b>	<b>REG:</b> APR	<b>DOB:</b> 12/09/2023	<b>Mating:</b> AI	<b>ID#:</b> ORA23U055							
SEPTEMBER 2024 TRANSTASMAN ANGUS CATTLE EVALUATION											TAIMATE L38 #	
CE DIR	CE DTRS	GL	BW	200	400	600	MCW	Milk	SS	DTC	<b>SIRE:</b> TAIMATE ROY R38 <sup>PV</sup>	TAIMATE 1506 #
+4.9	+2.1	-2.4	+2.2	+41	+75	+98	+85	+13	+1.7	-2.9		PINEBANK 59/09 #
57%	43%	82%	74%	70%	70%	66%	64%	57%	60%	33%		<b>DAM:</b> ORANGA 78 #
CWT	EMA	RIB	RUMP	RBY	IMF	NFI-I	DOC	TACE	INDEXES (\$)		Actual Birth Weight: 34kgs	
+47	+4.1	+1.9	+1.3	+0.7	+0.5	+0.4	+23		\$A	\$PRO	Dam's age: 78/17	
56%	53%	56%	55%	50%	57%	45%	61%		\$152	\$105	Genetic Conditions: AM3%,CA3%,DD3%,NH3%	
<b>NOTES:</b> Another Roy with grunt. Low birth, calving ease, good growth fats. Dam 5/5 very nice bull heifer mating option.											<b>Traits Observed:</b> GL,BWT,200WT,400WT,DOC	
Purchaser											\$:	

<b>LOT 9</b>	<b>ORANGA U053 #</b>	<b>REG:</b> APR	<b>DOB:</b> 12/09/2023	<b>Mating:</b> AI	<b>ID#:</b> ORA23U053							
SEPTEMBER 2024 TRANSTASMAN ANGUS CATTLE EVALUATION											TAIMATE L38 #	
CE DIR	CE DTRS	GL	BW	200	400	600	MCW	Milk	SS	DTC	<b>SIRE:</b> TAIMATE ROY R38 <sup>PV</sup>	TAIMATE 1506 #
+4.6	+3.5	-2.4	+1.9	+39	+71	+95	+82	+12	+1.5	-2.3		UNKNOWN
53%	40%	81%	72%	68%	68%	63%	59%	56%	56%	29%		<b>DAM:</b> ORANGA 103 #
CWT	EMA	RIB	RUMP	RBY	IMF	NFI-I	DOC	TACE	INDEXES (\$)		Actual Birth Weight: 34kgs	
+50	+4.3	+2.4	+1.2	+0.8	+0.8	+0.5	+29		\$A	\$PRO	Dam's age: 103/11	
54%	49%	51%	51%	45%	52%	40%	59%		\$146	\$100	Genetic Conditions: AM6%,CA6%,DD6%,NH6%	
<b>NOTES:</b> Low birth Roy. Good calving ease, moderate growth, good docility. Out of a 12yr old cow. Heifer mating option.											<b>Traits Observed:</b> GL,BWT,200WT,400WT,DOC	
Purchaser											\$:	

<b>LOT 10</b>	<b>ORANGA U020 #</b>	<b>REG:</b> APR	<b>DOB:</b> 08/09/2023	<b>Mating:</b> AI	<b>ID#:</b> ORA23U020							
SEPTEMBER 2024 TRANSTASMAN ANGUS CATTLE EVALUATION											SPRING COVE RENO 4021 #	
CE DIR	CE DTRS	GL	BW	200	400	600	MCW	Milk	SS	DTC	<b>SIRE:</b> WOODHILL AUTHENTIC <sup>PV</sup>	WOODHILL EVERGREEN U181-A130 #
+7.0	+5.1	-4.4	+2.7	+51	+98	+123	+98	+18	+0.9	-2.3		PINEBANK 27/13 #
52%	40%	82%	73%	69%	69%	65%	64%	58%	57%	29%		<b>DAM:</b> ORANGA 28 #
CWT	EMA	RIB	RUMP	RBY	IMF	NFI-I	DOC	TACE	INDEXES (\$)		Actual Birth Weight: 34kgs	
+71	+6.4	-1.1	-1.7	+0.8	+1.1	-0.5	+30		\$A	\$PRO	Dam's age: 28/18	
57%	52%	54%	53%	47%	56%	43%	58%		\$194	\$132	Genetic Conditions: AM2%,CA3%,DD3%,NH3%	
<b>NOTES:</b> First Authentic. Powerful bull, moderate birth, high calving ease, high growth and Carcass weight. Docile nice bull, would do a lot of work.											<b>Traits Observed:</b> GL,BWT,200WT,400WT,DOC	
Purchaser											\$:	



ANGUS AUSTRALIA BREED AVG. EBVS FOR 2022 BORN CALVES																	INDEXES (\$)			
CE DIR	CE DTRS	GL	BW	200	400	600	MCW	Milk	SS	DTC	CWT	EMA	RIB	RUMP	RBY	IMF	NFI-F	DOC	\$A	\$PRO
+1.8	+2.7	-4.4	+4.0	+51	+92	+119	+102	+17	+2.2	-4.7	+67	+6.4	+0.0	-0.3	+0.5	+2.3	+0.22	+20	+\$200	+\$149

# YEARLING BULLS

<b>LOT 11</b>	<b>ORANGA U003<sup>SV</sup></b>	<b>REG:</b> APR	<b>DOB:</b> 05/09/2023	<b>Mating:</b> AI	<b>ID#:</b> ORA23U003
---------------	---------------------------------	-----------------	------------------------	-------------------	-----------------------

SEPTEMBER 2024 TRANSTASMAN ANGUS CATTLE EVALUATION										
CE DIR	CE DTRS	GL	BW	200	400	600	MCW	Milk	SS	DTC
+9.5	+5.6	-5.3	+1.1	+47	+85	+105	+93	+14	+1.1	-3.4
60%	47%	82%	80%	81%	79%	79%	75%	70%	75%	34%
CWT	EMA	RIB	RUMP	RBY	IMF	NFI-I	DOC	TACE		INDEXES (\$)
+60	-2.8	+1.8	+2.0	-0.6	+1.3	-0.0	+21		\$A	\$PRO
66%	65%	64%	65%	55%	70%	55%	71%		\$158	\$117

SPRING COVE RENO 4021 #  
**SIRE:** WOODHILL AUTHENTIC<sup>PV</sup>  
 WOODHILL EVERGREEN U181-A130 #  
 NGAPUTAH K166 #  
**DAM:** ORANGA 42 #  
 ORANGA 18 #

**NOTES:** Low birth Authentic. High calving ease, good growth heifer mating option. Genomics done.



Purchaser \$:

**Actual Birth Weight:** 32kgs **Dam's age:** 42/19  
**Genetic Conditions:** AM3%,CA3%,DD4%,NH3%  
**Traits Observed:** GL,BWT,200WT,400WT,DOC,Genomics

<b>LOT 12</b>	<b>ORANGA U043<sup>SV</sup></b>	<b>REG:</b> APR	<b>DOB:</b> 10/09/2023	<b>Mating:</b> AI	<b>ID#:</b> ORA23U043
---------------	---------------------------------	-----------------	------------------------	-------------------	-----------------------

SEPTEMBER 2024 TRANSTASMAN ANGUS CATTLE EVALUATION										
CE DIR	CE DTRS	GL	BW	200	400	600	MCW	Milk	SS	DTC
+7.3	+6.0	-3.7	+1.6	+40	+72	+89	+82	+9	+0.2	-3.6
67%	53%	83%	82%	83%	81%	80%	77%	72%	78%	40%
CWT	EMA	RIB	RUMP	RBY	IMF	NFI-I	DOC	TACE		INDEXES (\$)
+41	+2.4	+4.2	+3.7	+0.6	-0.4	+0.2	+13		\$A	\$PRO
69%	68%	68%	69%	60%	72%	60%	76%		\$157	\$121

TAIMATE L38 #  
**SIRE:** TAIMATE ROY R38<sup>PV</sup>  
 TAIMATE 1506 #  
 PINEBANK 27/13 #  
**DAM:** ORANGA 46 #  
 UNKNOWN

**NOTES:** Low birth Roy. High calving ease, very good heifer mating option, out of a good cow 5/5. Genomics done.



Purchaser \$:

**Actual Birth Weight:** 34kgs **Dam's age:** 46/17  
**Genetic Conditions:** AMF,CAF,DDF,NHF  
**Traits Observed:** GL,BWT,200WT,400WT,DOC,Genomics

<b>LOT 13</b>	<b>ORANGA U018 #</b>	<b>REG:</b> APR	<b>DOB:</b> 08/09/2023	<b>Mating:</b> AI	<b>ID#:</b> ORA23U018
---------------	----------------------	-----------------	------------------------	-------------------	-----------------------

SEPTEMBER 2024 TRANSTASMAN ANGUS CATTLE EVALUATION										
CE DIR	CE DTRS	GL	BW	200	400	600	MCW	Milk	SS	DTC
+8.0	+6.7	-4.8	+2.0	+50	+93	+118	+100	+19	+1.1	-2.4
55%	43%	82%	73%	70%	69%	67%	66%	60%	63%	32%
CWT	EMA	RIB	RUMP	RBY	IMF	NFI-I	DOC	TACE		INDEXES (\$)
+63	+5.4	-0.7	-1.1	+0.4	+1.9	-0.3	+30		\$A	\$PRO
59%	57%	58%	58%	51%	62%	48%	60%		\$188	\$129

SPRING COVE RENO 4021 #  
**SIRE:** WOODHILL AUTHENTIC<sup>PV</sup>  
 WOODHILL EVERGREEN U181-A130 #  
 PINEBANK P06<sup>SV</sup>  
**DAM:** ORANGA S43 #  
 ORANGA 54 #

**NOTES:** Low birth Authentic. Heifer's first calf. High calving ease, big growth, very good heifer mating option.



Purchaser \$:

**Actual Birth Weight:** 28kgs **Dam's age:** 43/21  
**Genetic Conditions:** AM2%,CA2%,DD2%,NH2%  
**Traits Observed:** GL,BWT,200WT,400WT,DOC

<b>LOT 14</b>	<b>ORANGA U041 #</b>	<b>REG:</b> APR	<b>DOB:</b> 10/09/2023	<b>Mating:</b> AI	<b>ID#:</b> ORA23U041
---------------	----------------------	-----------------	------------------------	-------------------	-----------------------

SEPTEMBER 2024 TRANSTASMAN ANGUS CATTLE EVALUATION										
CE DIR	CE DTRS	GL	BW	200	400	600	MCW	Milk	SS	DTC
+6.9	+5.8	-4.0	+3.1	+52	+93	+117	+103	+19	+1.2	-3.3
55%	44%	82%	73%	70%	69%	67%	65%	59%	63%	32%
CWT	EMA	RIB	RUMP	RBY	IMF	NFI-I	DOC	TACE		INDEXES (\$)
+63	+4.9	-1.4	-1.9	+0.5	+1.8	-0.4	+29		\$A	\$PRO
59%	57%	58%	58%	51%	62%	48%	60%		\$193	\$132

SPRING COVE RENO 4021 #  
**SIRE:** WOODHILL AUTHENTIC<sup>PV</sup>  
 WOODHILL EVERGREEN U181-A130 #  
 PINEBANK P06<sup>SV</sup>  
**DAM:** ORANGA S26 #  
 ORANGA 77 #

**NOTES:** Authentic. Moderate birth, high calving ease, very good growth. Docile, heifer's first calf.



Purchaser \$:

**Actual Birth Weight:** 32kgs **Dam's age:** 26/21  
**Genetic Conditions:** AM2%,CA2%,DD2%,NH2%  
**Traits Observed:** GL,BWT,200WT,400WT,DOC

<b>LOT 15</b>	<b>ORANGA U056<sup>SV</sup></b>	<b>REG:</b> APR	<b>DOB:</b> 12/09/2023	<b>Mating:</b> AI	<b>ID#:</b> ORA23U056
---------------	---------------------------------	-----------------	------------------------	-------------------	-----------------------

SEPTEMBER 2024 TRANSTASMAN ANGUS CATTLE EVALUATION										
CE DIR	CE DTRS	GL	BW	200	400	600	MCW	Milk	SS	DTC
+8.6	+5.0	-3.7	+3.7	+56	+101	+128	+103	+15	+1.9	-1.7
62%	49%	82%	81%	82%	80%	80%	77%	72%	76%	36%
CWT	EMA	RIB	RUMP	RBY	IMF	NFI-I	DOC	TACE		INDEXES (\$)
+70	+10.0	-3.8	-5.2	+1.6	+0.9	-0.4	+35		\$A	\$PRO
68%	66%	66%	67%	57%	71%	57%	72%		\$203	\$140

SPRING COVE RENO 4021 #  
**SIRE:** WOODHILL AUTHENTIC<sup>PV</sup>  
 WOODHILL EVERGREEN U181-A130 #  
 PINEBANK 69/16<sup>SV</sup>  
**DAM:** ORANGA 68 #  
 ORANGA 8 #

**NOTES:** Authentic. Moderate birth, high calving ease, high growth Carcass weight EMA. Docile, out of a good cow 3/3. Genomics done.



Purchaser \$:

**Actual Birth Weight:** 37kgs **Dam's age:** 68/19  
**Genetic Conditions:** AM3%,CA3%,DD3%,NH3%  
**Traits Observed:** GL,BWT,200WT,400WT,DOC,Genomics

ANGUS AUSTRALIA BREED AVG. EBVS FOR 2022 BORN CALVES																	INDEXES (\$)			
CE DIR	CE DTRS	GL	BW	200	400	600	MCW	Milk	SS	DTC	CWT	EMA	RIB	RUMP	RBY	IMF	NFI-F	DOC	\$A	\$PRO
+1.8	+2.7	-4.4	+4.0	+51	+92	+119	+102	+17	+2.2	-4.7	+67	+6.4	+0.0	-0.3	+0.5	+2.3	+0.22	+20	+\$200	+\$149

# YEARLING BULLS

<b>LOT 16</b>	<b>ORANGA U036 #</b>	<b>REG:</b> APR	<b>DOB:</b> 10/09/2023	<b>Mating:</b> AI	<b>ID#:</b> ORA23U036						
<b>SEPTEMBER 2024 TRANSTASMAN ANGUS CATTLE EVALUATION</b>											
CE DIR	CE DTRS	GL	BW	200	400	600	MCW	Milk	SS	DTC	<b>SIRE:</b> SPRING COVE RENO 4021 # <b>WOODHILL AUTHENTIC</b> <sup>PV</sup> WOODHILL EVERGREEN U181-A130 # NGAPUTAHI K166 # <b>DAM:</b> <b>ORANGA 66 #</b> ORANGA 151 #
+5.6	+5.3	-3.9	+2.8	+49	+84	+108	+88	+15	+0.9	-2.5	
51%	39%	81%	73%	68%	69%	65%	63%	56%	55%	27%	
CWT	EMA	RIB	RUMP	RBY	IMF	NFI-I	DOC	<b>TACE</b>	<b>INDEXES (\$)</b>		<b>Actual Birth Weight:</b> 36kgs <b>Dam's age:</b> 66/19 <b>Genetic Conditions:</b> AM3%,CA3%,DD4%,NH3% <b>Traits Observed:</b> GL,BWT,200WT,400WT,DOC
+59	+6.1	-0.9	-1.5	+0.7	+1.5	-0.4	+27		\$A	\$PRO	
56%	50%	51%	51%	44%	54%	40%	56%		\$183	\$123	

**NOTES:** Authentic. Moderate birth, very good calving ease, good growth and docility.

Purchaser: \$:

<b>LOT 17</b>	<b>ORANGA U034 #</b>	<b>REG:</b> APR	<b>DOB:</b> 10/09/2023	<b>Mating:</b> AI	<b>ID#:</b> ORA23U034						
<b>SEPTEMBER 2024 TRANSTASMAN ANGUS CATTLE EVALUATION</b>											
CE DIR	CE DTRS	GL	BW	200	400	600	MCW	Milk	SS	DTC	<b>SIRE:</b> MILLAH MURRAH LOCH UP L133 <sup>PV</sup> <b>HALLMARK STIRLING Q016</b> <sup>SV</sup> HEATHER DELL L37 # UNKNOWN <b>DAM:</b> <b>ORANGA 156 #</b> UNKNOWN
+8.1	+4.3	-4.0	+2.1	+34	+68	+92	+77	+15	+0.3	-2.2	
48%	39%	62%	72%	68%	68%	64%	60%	55%	58%	31%	
CWT	EMA	RIB	RUMP	RBY	IMF	NFI-I	DOC	<b>TACE</b>	<b>INDEXES (\$)</b>		<b>Actual Birth Weight:</b> 35kgs <b>Dam's age:</b> 156/11 <b>Genetic Conditions:</b> AM6%,CA6%,DD6%,NH6% <b>Traits Observed:</b> BWT,200WT,400WT,DOC
+51	+3.6	+1.8	+0.8	+0.3	+2.0	+0.4	+27		\$A	\$PRO	
54%	52%	54%	54%	47%	56%	43%	57%		\$141	\$93	

**NOTES:** Moderate birth, high calving ease, docility.

Purchaser: \$:

<b>LOT 18</b>	<b>ORANGA U085 <sup>SV</sup></b>	<b>REG:</b> APR	<b>DOB:</b> 25/09/2023	<b>Mating:</b> Natural	<b>ID#:</b> ORA23U085						
<b>SEPTEMBER 2024 TRANSTASMAN ANGUS CATTLE EVALUATION</b>											
CE DIR	CE DTRS	GL	BW	200	400	600	MCW	Milk	SS	DTC	<b>SIRE:</b> KAKAHU PEPPER 18046 <sup>PV</sup> <b>KAKAHU 20124</b> <sup>PV</sup> KAKAHU 18496 <sup>SV</sup> PINEBANK 27/13 # <b>DAM:</b> <b>ORANGA 1 #</b> ORANGA 85 #
+2.9	+10.4	-2.4	+2.8	+33	+68	+91	+65	+14	-1.0	-1.5	
60%	48%	80%	80%	81%	79%	79%	75%	70%	75%	35%	
CWT	EMA	RIB	RUMP	RBY	IMF	NFI-I	DOC	<b>TACE</b>	<b>INDEXES (\$)</b>		<b>Actual Birth Weight:</b> 35kgs <b>Dam's age:</b> 01/20 <b>Genetic Conditions:</b> AM3%,CA3%,DD3%,NH3% <b>Traits Observed:</b> BWT,200WT,400WT,DOC,Genomics
+54	+5.0	+0.5	-1.8	+1.1	+1.4	+0.4	+10		\$A	\$PRO	
66%	64%	64%	65%	54%	70%	56%	72%		\$143	\$83	

**NOTES:** Moderate birth, good calving ease. Genomics done.

Purchaser: \$:

<b>LOT 19</b>	<b>ORANGA U064 <sup>SV</sup></b>	<b>REG:</b> APR	<b>DOB:</b> 18/09/2023	<b>Mating:</b> Natural	<b>ID#:</b> ORA23U064						
<b>SEPTEMBER 2024 TRANSTASMAN ANGUS CATTLE EVALUATION</b>											
CE DIR	CE DTRS	GL	BW	200	400	600	MCW	Milk	SS	DTC	<b>SIRE:</b> KAKAHU PEPPER 18046 <sup>PV</sup> <b>KAKAHU 20124</b> <sup>PV</sup> KAKAHU 18496 <sup>SV</sup> NGAPUTAHI K166 # <b>DAM:</b> <b>ORANGA 9 #</b> ORANGA 41 #
+5.0	+3.2	-5.8	+3.5	+32	+59	+76	+51	+14	+0.1	-2.5	
60%	48%	79%	80%	81%	79%	79%	76%	71%	75%	34%	
CWT	EMA	RIB	RUMP	RBY	IMF	NFI-I	DOC	<b>TACE</b>	<b>INDEXES (\$)</b>		<b>Actual Birth Weight:</b> 39kgs <b>Dam's age:</b> 09/18 <b>Genetic Conditions:</b> AM3%,CA3%,DD4%,NH3% <b>Traits Observed:</b> BWT,200WT,400WT,DOC,Genomics
+38	+1.1	+0.3	-1.1	+0.5	+1.5	+0.2	+26		\$A	\$PRO	
66%	64%	64%	65%	54%	70%	56%	72%		\$128	\$70	

**NOTES:** Moderate birth, good calving ease. Genomics done.

Purchaser: \$:

<b>LOT 20</b>	<b>ORANGA U071 <sup>SV</sup></b>	<b>REG:</b> APR	<b>DOB:</b> 22/09/2023	<b>Mating:</b> Natural	<b>ID#:</b> ORA23U071						
<b>SEPTEMBER 2024 TRANSTASMAN ANGUS CATTLE EVALUATION</b>											
CE DIR	CE DTRS	GL	BW	200	400	600	MCW	Milk	SS	DTC	<b>SIRE:</b> KAKAHU PEPPER 18046 <sup>PV</sup> <b>KAKAHU 20124</b> <sup>PV</sup> KAKAHU 18496 <sup>SV</sup> PINEBANK 27/13 # <b>DAM:</b> <b>ORANGA 41 #</b> ORANGA 39 #
-1.1	+3.0	-1.7	+4.1	+41	+74	+98	+57	+20	-0.3	-2.0	
60%	48%	79%	80%	81%	79%	79%	75%	70%	75%	34%	
CWT	EMA	RIB	RUMP	RBY	IMF	NFI-I	DOC	<b>TACE</b>	<b>INDEXES (\$)</b>		<b>Actual Birth Weight:</b> 39kgs <b>Dam's age:</b> 41/20 <b>Genetic Conditions:</b> AM3%,CA3%,DD3%,NH3% <b>Traits Observed:</b> BWT,200WT,400WT,DOC,Genomics
+56	+8.4	-1.1	-1.6	+1.2	+0.8	-0.2	+24		\$A	\$PRO	
66%	63%	64%	65%	54%	69%	55%	72%		\$162	\$85	

**NOTES:** Bit bigger in birth, suitable for cows. Nice bull. Genomics done.

Purchaser: \$:

ANGUS AUSTRALIA BREED AVG. EBVS FOR 2022 BORN CALVES																	INDEXES (\$)			
CE DIR	CE DTRS	GL	BW	200	400	600	MCW	Milk	SS	DTC	CWT	EMA	RIB	RUMP	RBY	IMF	NFI-F	DOC	\$A	\$PRO
+1.8	+2.7	-4.4	+4.0	+51	+92	+119	+102	+17	+2.2	-4.7	+67	+6.4	+0.0	-0.3	+0.5	+2.3	+0.22	+20	+200	+149



# YEARLING BULLS

<b>LOT 21</b>	<b>ORANGA U102<sup>SV</sup></b>	<b>REG:</b> APR	<b>DOB:</b> 02/10/2023	<b>Mating:</b> Natural	<b>ID#:</b> ORA23U102
---------------	---------------------------------	-----------------	------------------------	------------------------	-----------------------

SEPTEMBER 2024 TRANSTASMAN ANGUS CATTLE EVALUATION										
CE DIR	CE DTRS	GL	BW	200	400	600	MCW	Milk	SS	DTC
+6.2	+2.1	-4.6	+2.7	+36	+74	+99	+104	+17	+1.0	-3.6
60%	49%	79%	79%	80%	78%	79%	75%	69%	75%	36%
CWT	EMA	RIB	RUMP	RBY	IMF	NFI-I	DOC	TACE		
+34	+1.5	-0.2	-1.1	+0.8	+2.7	+0.2	+33	INDEXES (\$)		
66%	64%	65%	66%	57%	70%	57%	71%	\$A	\$PRO	
								\$147	\$99	

TAIMATE P52 #  
**SIRE:** TAIMATE R177<sup>SV</sup>  
 TAIMATE N 48 #  
 PINEBANK 69/16<sup>SV</sup>  
**DAM:** ORANGA S37 #  
 ORANGA 47 #

**NOTES:** Moderate birth, good calving ease. Docile, nice bull. Genomics done.

**Actual Birth Weight:** 34kgs **Dam's age:** 37/21

**Genetic Conditions:** AM3%,CA3%,DD3%,NH3%

**Traits Observed:** BWT,200WT,400WT,DOC,Genomics

Purchaser \$:

<b>LOT 22</b>	<b>ORANGA U083<sup>SV</sup></b>	<b>REG:</b> APR	<b>DOB:</b> 25/09/2023	<b>Mating:</b> Natural	<b>ID#:</b> ORA23U083
---------------	---------------------------------	-----------------	------------------------	------------------------	-----------------------

SEPTEMBER 2024 TRANSTASMAN ANGUS CATTLE EVALUATION										
CE DIR	CE DTRS	GL	BW	200	400	600	MCW	Milk	SS	DTC
+2.8	+6.7	-5.4	+3.5	+35	+67	+82	+61	+10	-0.2	-2.9
58%	47%	79%	80%	80%	78%	78%	75%	70%	74%	33%
CWT	EMA	RIB	RUMP	RBY	IMF	NFI-I	DOC	TACE		
+40	+3.0	+1.5	-0.5	+1.0	+0.4	+0.1	+13	INDEXES (\$)		
65%	63%	63%	65%	52%	69%	55%	71%	\$A	\$PRO	
								\$143	\$92	

KAKAHU PEPPER 18046<sup>PV</sup>  
**SIRE:** KAKAHU 20124<sup>PV</sup>  
 KAKAHU 18496<sup>SV</sup>  
 UNKNOWN  
**DAM:** ORANGA 16 #  
 UNKNOWN

**NOTES:** Bit bigger in birth, calving ease suitable for cows. Genomics done.

**Actual Birth Weight:** 40kgs **Dam's age:** 16/13

**Genetic Conditions:** AM6%,CA6%,DD6%,NH6%

**Traits Observed:** BWT,200WT,400WT,DOC,Genomics

Purchaser \$:

<b>LOT 23</b>	<b>ORANGA U022 #</b>	<b>REG:</b> APR	<b>DOB:</b> 09/09/2023	<b>Mating:</b> AI	<b>ID#:</b> ORA23U022
---------------	----------------------	-----------------	------------------------	-------------------	-----------------------

SEPTEMBER 2024 TRANSTASMAN ANGUS CATTLE EVALUATION										
CE DIR	CE DTRS	GL	BW	200	400	600	MCW	Milk	SS	DTC
+6.1	+5.6	-4.8	+3.6	+54	+96	+120	+105	+17	+1.1	-2.8
52%	41%	81%	73%	68%	69%	66%	64%	57%	60%	30%
CWT	EMA	RIB	RUMP	RBY	IMF	NFI-I	DOC	TACE		
+65	+6.5	-1.2	-1.7	+0.6	+1.6	-0.4	+29	INDEXES (\$)		
57%	54%	55%	55%	48%	59%	45%	58%	\$A	\$PRO	
								\$199	\$137	

SPRING COVE RENO 4021 #  
**SIRE:** WOODHILL AUTHENTIC<sup>PV</sup>  
 WOODHILL EVERGREEN U181-A130 #  
 PINEBANK P06<sup>SV</sup>  
**DAM:** ORANGA S32 #  
 ORANGA 63 #

**NOTES:** Authentic. Moderate birth, high calving ease, high growth. Docility, out of a first calving heifer.



**Actual Birth Weight:** 34kgs **Dam's age:** 32/21

**Genetic Conditions:** AM2%,CA2%,DD2%,NH2%

**Traits Observed:** GL,BWT,200WT,400WT,DOC

Purchaser \$:

<b>LOT 24</b>	<b>ORANGA U088 #</b>	<b>REG:</b> APR	<b>DOB:</b> 26/09/2023	<b>Mating:</b> Natural	<b>ID#:</b> ORA23U088
---------------	----------------------	-----------------	------------------------	------------------------	-----------------------

SEPTEMBER 2024 TRANSTASMAN ANGUS CATTLE EVALUATION										
CE DIR	CE DTRS	GL	BW	200	400	600	MCW	Milk	SS	DTC
+7.1	+5.8	-2.4	+1.8	+25	+53	+72	+54	+11	+0.4	-2.6
47%	38%	57%	71%	66%	67%	63%	58%	56%	51%	27%
CWT	EMA	RIB	RUMP	RBY	IMF	NFI-I	DOC	TACE		
+33	+3.0	+3.4	+3.3	+0.2	+2.3	+0.5	+21	INDEXES (\$)		
53%	45%	48%	48%	41%	50%	39%	55%	\$A	\$PRO	
								\$133	\$95	

MATAURI CRIKEY G244 #  
**SIRE:** PINEBANK P06<sup>SV</sup>  
 PINEBANK 230/16 #  
 UNKNOWN  
**DAM:** ORANGA 82 #  
 UNKNOWN

**NOTES:** Beginn of second run. Low birth, high calving ease, good heifer mating option. Out of a good old cow 11yr.

**Actual Birth Weight:** 33kgs **Dam's age:** 82/12

**Genetic Conditions:** AM6%,CA7%,DD6%,NH6%

**Traits Observed:** BWT,200WT,400WT,DOC

Purchaser \$:

<b>LOT 25</b>	<b>ORANGA U099 #</b>	<b>REG:</b> APR	<b>DOB:</b> 01/10/2023	<b>Mating:</b> Natural	<b>ID#:</b> ORA23U099
---------------	----------------------	-----------------	------------------------	------------------------	-----------------------

SEPTEMBER 2024 TRANSTASMAN ANGUS CATTLE EVALUATION										
CE DIR	CE DTRS	GL	BW	200	400	600	MCW	Milk	SS	DTC
+6.6	+6.5	-4.3	+2.1	+30	+61	+79	+41	+13	0.0	-3.0
49%	39%	57%	71%	67%	68%	64%	62%	56%	54%	28%
CWT	EMA	RIB	RUMP	RBY	IMF	NFI-I	DOC	TACE		
+46	+6.8	+1.3	+0.1	+0.9	+1.7	+0.7	+15	INDEXES (\$)		
54%	49%	51%	51%	43%	54%	42%	57%	\$A	\$PRO	
								\$167	\$115	

KAKAHU PEPPER 18046<sup>PV</sup>  
**SIRE:** KAKAHU 20124<sup>PV</sup>  
 KAKAHU 18496<sup>SV</sup>  
 PINEBANK 112/16 #  
**DAM:** ORANGA 55 #  
 ORANGA 6 #

**NOTES:** Low birth, high calving ease. Good heifer mating option.



**Actual Birth Weight:** 37kgs **Dam's age:** 55/18

**Genetic Conditions:** AM3%,CA3%,DD3%,NH3%

**Traits Observed:** BWT,200WT,400WT,DOC

Purchaser \$:

ANGUS AUSTRALIA BREED AVG. EBVS FOR 2022 BORN CALVES																	INDEXES (\$)			
CE DIR	CE DTRS	GL	BW	200	400	600	MCW	Milk	SS	DTC	CWT	EMA	RIB	RUMP	RBY	IMF	NFI-F	DOC	\$A	\$PRO
+1.8	+2.7	-4.4	+4.0	+51	+92	+119	+102	+17	+2.2	-4.7	+67	+6.4	+0.0	-0.3	+0.5	+2.3	+0.22	+20	+\$200	+\$149

# YEARLING BULLS

<b>LOT 26</b>	<b>ORANGA U069 #</b>	<b>REG:</b> APR	<b>DOB:</b> 22/09/2023	<b>Mating:</b> Natural	<b>ID#:</b> ORA23U069
---------------	----------------------	-----------------	------------------------	------------------------	-----------------------

SEPTEMBER 2024 TRANSTASMAN ANGUS CATTLE EVALUATION										
CE DIR	CE DTRS	GL	BW	200	400	600	MCW	Milk	SS	DTC
+4.8	+5.8	-3.5	+2.5	+28	+51	+71	+40	+15	-0.8	-1.9
51%	41%	60%	72%	67%	68%	64%	64%	56%	57%	30%
CWT	EMA	RIB	RUMP	RBY	IMF	NFI-I	DOC	TACE		
+39	+5.9	+0.1	-1.1	+1.1	+1.8	+0.4	+18	INDEXES (\$)		
55%	51%	54%	54%	45%	57%	45%	58%	\$A	\$PRO	
								\$139	\$76	

KAKAHU PEPPER 18046 <sup>PV</sup>  
**SIRE:** KAKAHU 20124 <sup>PV</sup>  
 KAKAHU 18496 <sup>SV</sup>  
 PINEBANK 93/15 #  
**DAM:** ORANGA 27 #  
 ORANGA 28 #

NOTES: Low birth, good calving ease. Good heifer mating option.

Actual Birth Weight: 35kgs Dam's age: 27/18  
 Genetic Conditions: AM3%,CA3%,DD3%,NH3%  
 Traits Observed: BWT,200WT,400WT,DOC

Purchaser \$:

<b>LOT 27</b>	<b>ORANGA U070 #</b>	<b>REG:</b> APR	<b>DOB:</b> 22/09/2023	<b>Mating:</b> Natural	<b>ID#:</b> ORA23U070
---------------	----------------------	-----------------	------------------------	------------------------	-----------------------

SEPTEMBER 2024 TRANSTASMAN ANGUS CATTLE EVALUATION										
CE DIR	CE DTRS	GL	BW	200	400	600	MCW	Milk	SS	DTC
+4.9	+6.2	-4.1	+2.8	+29	+61	+80	+48	+16	-0.8	-2.5
51%	40%	58%	72%	67%	68%	64%	61%	56%	55%	29%
CWT	EMA	RIB	RUMP	RBY	IMF	NFI-I	DOC	TACE		
+46	+6.0	+0.9	+0.1	+1.0	+1.3	+0.4	+18	INDEXES (\$)		
55%	49%	52%	52%	44%	54%	43%	58%	\$A	\$PRO	
								\$151	\$92	

KAKAHU PEPPER 18046 <sup>PV</sup>  
**SIRE:** KAKAHU 20124 <sup>PV</sup>  
 KAKAHU 18496 <sup>SV</sup>  
 PINEBANK 27/13 #  
**DAM:** ORANGA 6 #  
 ORANGA 20 #

NOTES: Moderate birth, good calving ease.

Actual Birth Weight: 37kgs Dam's age: 06/19  
 Genetic Conditions: AM3%,CA3%,DD3%,NH3%  
 Traits Observed: BWT,200WT,400WT,DOC

Purchaser \$:

<b>LOT 28</b>	<b>ORANGA U108 #</b>	<b>REG:</b> APR	<b>DOB:</b> 04/10/2023	<b>Mating:</b> Natural	<b>ID#:</b> ORA23U108
---------------	----------------------	-----------------	------------------------	------------------------	-----------------------

SEPTEMBER 2024 TRANSTASMAN ANGUS CATTLE EVALUATION										
CE DIR	CE DTRS	GL	BW	200	400	600	MCW	Milk	SS	DTC
+5.1	+6.0	-4.0	+2.5	+31	+57	+75	+41	+15	-0.7	-2.4
52%	42%	61%	72%	68%	68%	65%	64%	56%	58%	31%
CWT	EMA	RIB	RUMP	RBY	IMF	NFI-I	DOC	TACE		
+41	+5.7	-0.1	-0.9	+1.0	+1.5	+0.3	+23	INDEXES (\$)		
56%	53%	55%	55%	47%	58%	46%	59%	\$A	\$PRO	
								\$152	\$90	

KAKAHU PEPPER 18046 <sup>PV</sup>  
**SIRE:** KAKAHU 20124 <sup>PV</sup>  
 KAKAHU 18496 <sup>SV</sup>  
 PINEBANK 93/15 #  
**DAM:** ORANGA 78 #  
 ORANGA 53 #

NOTES: Low birth, high calving ease. Good heifer mating option.

Actual Birth Weight: 31kgs Dam's age: 78/20  
 Genetic Conditions: AM2%,CA2%,DD2%,NH2%  
 Traits Observed: BWT,200WT,400WT,DOC

Purchaser \$:

<b>LOT 29</b>	<b>ORANGA U115 #</b>	<b>REG:</b> APR	<b>DOB:</b> 10/10/2023	<b>Mating:</b> Natural	<b>ID#:</b> ORA23U115
---------------	----------------------	-----------------	------------------------	------------------------	-----------------------

SEPTEMBER 2024 TRANSTASMAN ANGUS CATTLE EVALUATION										
CE DIR	CE DTRS	GL	BW	200	400	600	MCW	Milk	SS	DTC
+6.2	+6.8	-4.6	+2.6	+37	+72	+99	+71	+15	+0.4	-2.2
50%	40%	58%	70%	67%	68%	64%	62%	55%	55%	29%
CWT	EMA	RIB	RUMP	RBY	IMF	NFI-I	DOC	TACE		
+58	+5.5	+0.2	-1.1	+0.8	+1.8	+0.4	+32	INDEXES (\$)		
55%	50%	52%	52%	44%	55%	43%	58%	\$A	\$PRO	
								\$163	\$108	

KAKAHU PEPPER 18046 <sup>PV</sup>  
**SIRE:** KAKAHU 20124 <sup>PV</sup>  
 KAKAHU 18496 <sup>SV</sup>  
 PINEBANK 69/16 <sup>SV</sup>  
**DAM:** ORANGA 107 #  
 ORANGA 102 #

NOTES: Moderate birth, good calving ease and docility.

Actual Birth Weight: 32kgs Dam's age: 107/20  
 Genetic Conditions: AM3%,CA3%,DD3%,NH3%  
 Traits Observed: BWT,200WT,400WT,DOC

Purchaser \$:

<b>LOT 30</b>	<b>ORANGA U049 #</b>	<b>REG:</b> APR	<b>DOB:</b> 11/09/2023	<b>Mating:</b> AI	<b>ID#:</b> ORA23U049
---------------	----------------------	-----------------	------------------------	-------------------	-----------------------

SEPTEMBER 2024 TRANSTASMAN ANGUS CATTLE EVALUATION										
CE DIR	CE DTRS	GL	BW	200	400	600	MCW	Milk	SS	DTC
+6.3	+5.9	-3.1	+2.7	+49	+90	+112	+96	+14	+1.1	-2.9
52%	40%	82%	72%	68%	68%	64%	61%	56%	58%	30%
CWT	EMA	RIB	RUMP	RBY	IMF	NFI-I	DOC	TACE		
+58	+6.0	-1.0	-1.8	+0.9	+1.2	-0.4	+31	INDEXES (\$)		
57%	54%	55%	54%	48%	58%	44%	58%	\$A	\$PRO	
								\$188	\$132	

SPRING COVE RENO 4021 #  
**SIRE:** WOODHILL AUTHENTIC <sup>PV</sup>  
 WOODHILL EVERGREEN U181-A130 #  
 PINEBANK 92Q <sup>SV</sup>  
**DAM:** ORANGA S61 #  
 ORANGA 3 #

NOTES: Authentic. Low birth, high calving ease, high growth, out of a heifer, docility. Good heifer mating option.

Actual Birth Weight: 30kgs Dam's age: 61/21  
 Genetic Conditions: AM2%,CA2%,DD2%,NH2%  
 Traits Observed: GL,BWT,200WT,400WT,DOC

Purchaser \$:

ANGUS AUSTRALIA BREED AVG. EBVS FOR 2022 BORN CALVES																	INDEXES (\$)			
CE DIR	CE DTRS	GL	BW	200	400	600	MCW	Milk	SS	DTC	CWT	EMA	RIB	RUMP	RBY	IMF	NFI-F	DOC	\$A	\$PRO
+1.8	+2.7	-4.4	+4.0	+51	+92	+119	+102	+17	+2.2	-4.7	+67	+6.4	+0.0	-0.3	+0.5	+2.3	+0.22	+20	+200	+149

# YEARLING BULLS

<b>LOT 31</b>	<b>ORANGA U116</b> <sup>SV</sup>	<b>REG:</b> APR	<b>DOB:</b> 12/09/2023	<b>Mating:</b> AI	<b>ID#:</b> ORA23U116
---------------	----------------------------------	-----------------	------------------------	-------------------	-----------------------

SEPTEMBER 2024 TRANSTASMAN ANGUS CATTLE EVALUATION										
CE DIR	CE DTRS	GL	BW	200	400	600	MCW	Milk	SS	DTC
+8.8	+7.0	-4.6	+1.2	+50	+82	+101	+82	+15	-0.3	-1.6
62%	50%	82%	81%	81%	79%	79%	76%	71%	76%	36%
CWT	EMA	RIB	RUMP	RBY	IMF	NFI-I	DOC	TACE		
+57	+2.4	-1.5	-2.3	+0.3	+1.7	-0.5	+14	INDEXES (\$)		
68%	66%	66%	66%	57%	71%	56%	72%	\$A	\$PRO	
								\$169	\$105	

SPRING COVE RENO 4021 #  
**SIRE:** WOODHILL AUTHENTIC <sup>PV</sup>  
 WOODHILL EVERGREEN U181-A130 #  
 PINEBANK 69/16 <sup>SV</sup>  
**DAM:** ORANGA 5 #  
 ORANGA 63 #

**NOTES:** Authentic. Low birth, high calving ease. Good heifer mating option. Genomics done.

**Actual Birth Weight:** 34kgs **Dam's age:** 05/19  
**Genetic Conditions:** AM2%,CA2%,DD2%,NH2%  
**Traits Observed:** GL,BWT,200WT,400WT,DOC,Genomics

Purchaser \$:

<b>LOT 32</b>	<b>ORANGA U076</b> #	<b>REG:</b> APR	<b>DOB:</b> 23/09/2023	<b>Mating:</b> Natural	<b>ID#:</b> ORA23U076
---------------	----------------------	-----------------	------------------------	------------------------	-----------------------

SEPTEMBER 2024 TRANSTASMAN ANGUS CATTLE EVALUATION										
CE DIR	CE DTRS	GL	BW	200	400	600	MCW	Milk	SS	DTC
+5.8	+4.3	-4.2	+2.5	+36	+69	+91	+94	+13	+1.6	-3.3
51%	39%	59%	71%	68%	68%	66%	63%	55%	57%	29%
CWT	EMA	RIB	RUMP	RBY	IMF	NFI-I	DOC	TACE		
+34	+4.5	+2.0	+1.2	+0.8	+1.6	+0.3	+27	INDEXES (\$)		
56%	50%	53%	53%	46%	55%	43%	58%	\$A	\$PRO	
								\$147	\$106	

TAIMATE P52 #  
**SIRE:** TAIMATE R177 <sup>SV</sup>  
 TAIMATE N 48 #  
 PINEBANK 69/16 <sup>SV</sup>  
**DAM:** ORANGA S106 #  
 ORANGA 16 #

**NOTES:** Low birth, good calving ease and docility. Out of a heifer, good heifer mating option.

**Actual Birth Weight:** 32kgs **Dam's age:** 106/21  
**Genetic Conditions:** AM3%,CA3%,DD3%,NH3%  
**Traits Observed:** BWT,200WT,400WT,DOC

Purchaser \$:

<b>LOT 33</b>	<b>ORANGA U081</b> #	<b>REG:</b> APR	<b>DOB:</b> 25/09/2023	<b>Mating:</b> Natural	<b>ID#:</b> ORA23U081
---------------	----------------------	-----------------	------------------------	------------------------	-----------------------

SEPTEMBER 2024 TRANSTASMAN ANGUS CATTLE EVALUATION										
CE DIR	CE DTRS	GL	BW	200	400	600	MCW	Milk	SS	DTC
+6.7	+4.9	-4.1	+2.1	+31	+61	+82	+82	+14	+1.2	-3.2
50%	39%	60%	71%	68%	68%	65%	63%	54%	56%	29%
CWT	EMA	RIB	RUMP	RBY	IMF	NFI-I	DOC	TACE		
+31	+4.6	+2.3	+1.7	+0.8	+1.7	+0.4	+29	INDEXES (\$)		
56%	50%	53%	53%	46%	55%	43%	58%	\$A	\$PRO	
								\$139	\$98	

TAIMATE P52 #  
**SIRE:** TAIMATE R177 <sup>SV</sup>  
 TAIMATE N 48 #  
 PINEBANK 69/16 <sup>SV</sup>  
**DAM:** ORANGA S58 #  
 ORANGA 60 #

**NOTES:** Low birth, good calving ease and docility. Out of a heifer, good heifer mating option.

**Actual Birth Weight:** 30kgs **Dam's age:** 58/21  
**Genetic Conditions:** AM3%,CA3%,DD3%,NH3%  
**Traits Observed:** BWT,200WT,400WT,DOC

Purchaser \$:

<b>LOT 34</b>	<b>ORANGA U114</b> #	<b>REG:</b> APR	<b>DOB:</b> 09/10/2023	<b>Mating:</b> Natural	<b>ID#:</b> ORA23U114
---------------	----------------------	-----------------	------------------------	------------------------	-----------------------

SEPTEMBER 2024 TRANSTASMAN ANGUS CATTLE EVALUATION										
CE DIR	CE DTRS	GL	BW	200	400	600	MCW	Milk	SS	DTC
+6.1	+4.4	-3.8	+2.1	+34	+69	+88	+85	+14	+1.5	-3.2
50%	39%	59%	71%	67%	68%	65%	61%	54%	56%	29%
CWT	EMA	RIB	RUMP	RBY	IMF	NFI-I	DOC	TACE		
+36	+5.0	+1.9	+1.4	+0.8	+1.8	+0.4	+30	INDEXES (\$)		
55%	50%	52%	52%	46%	54%	43%	57%	\$A	\$PRO	
								\$151	\$108	

TAIMATE P52 #  
**SIRE:** TAIMATE R177 <sup>SV</sup>  
 TAIMATE N 48 #  
 PINEBANK 69/16 <sup>SV</sup>  
**DAM:** ORANGA S57 #  
 ORANGA 103 #

**NOTES:** Low birth, good calving ease and docility. Out of a heifer, good heifer mating option.

**Actual Birth Weight:** 31kgs **Dam's age:** 57/21  
**Genetic Conditions:** AM3%,CA3%,DD3%,NH3%  
**Traits Observed:** BWT,200WT,400WT,DOC

Purchaser \$:

<b>LOT 35</b>	<b>ORANGA U052</b> #	<b>REG:</b> APR	<b>DOB:</b> 12/09/2023	<b>Mating:</b> AI	<b>ID#:</b> ORA23U052
---------------	----------------------	-----------------	------------------------	-------------------	-----------------------

SEPTEMBER 2024 TRANSTASMAN ANGUS CATTLE EVALUATION										
CE DIR	CE DTRS	GL	BW	200	400	600	MCW	Milk	SS	DTC
+6.8	+6.7	-3.0	+2.0	+52	+90	+118	+104	+14	+1.3	-2.0
51%	39%	81%	73%	68%	69%	66%	62%	56%	57%	28%
CWT	EMA	RIB	RUMP	RBY	IMF	NFI-I	DOC	TACE		
+65	+5.7	-1.4	-2.5	+0.8	+1.7	-0.4	+30	INDEXES (\$)		
57%	52%	53%	52%	46%	56%	42%	57%	\$A	\$PRO	
								\$185	\$129	

SPRING COVE RENO 4021 #  
**SIRE:** WOODHILL AUTHENTIC <sup>PV</sup>  
 WOODHILL EVERGREEN U181-A130 #  
 PINEBANK 69/16 <sup>SV</sup>  
**DAM:** ORANGA S66 #  
 ORANGA 10 #

**NOTES:** Authentic. Low birth, high calving ease, high growth, out of a heifer. Docility. Good heifer mating option.



**Actual Birth Weight:** 29kgs **Dam's age:** 66/21  
**Genetic Conditions:** AM3%,CA3%,DD3%,NH3%  
**Traits Observed:** GL,BWT,200WT,400WT,DOC

Purchaser \$:

ANGUS AUSTRALIA BREED AVG. EBVS FOR 2022 BORN CALVES																	INDEXES (\$)			
CE DIR	CE DTRS	GL	BW	200	400	600	MCW	Milk	SS	DTC	CWT	EMA	RIB	RUMP	RBY	IMF	NFI-F	DOC	\$A	\$PRO
+1.8	+2.7	-4.4	+4.0	+51	+92	+119	+102	+17	+2.2	-4.7	+67	+6.4	+0.0	-0.3	+0.5	+2.3	+0.22	+20	+\$200	+\$149

# YEARLING BULLS

<b>LOT 36</b>	<b>ORANGA U094 #</b>	<b>REG:</b> APR	<b>DOB:</b> 29/09/2023	<b>Mating:</b> Natural	<b>ID#:</b> ORA23U094
---------------	----------------------	-----------------	------------------------	------------------------	-----------------------

SEPTEMBER 2024 TRANSTASMAN ANGUS CATTLE EVALUATION										
CE DIR	CE DTRS	GL	BW	200	400	600	MCW	Milk	SS	DTC
+7.7	+5.8	-4.3	+0.7	+28	+58	+75	+71	+13	+1.2	-3.2
50%	39%	58%	71%	67%	68%	65%	62%	54%	56%	29%
CWT	EMA	RIB	RUMP	RBY	IMF	NFI-I	DOC	TACE		
+27	+4.9	+2.4	+1.9	+0.7	+2.0	+0.4	+20	INDEXES (\$)		
55%	50%	52%	52%	46%	54%	43%	57%	\$A	\$PRO	
								\$139	\$101	

TAIMATE P52 #  
**SIRE:** TAIMATE R177<sup>SV</sup>  
 TAIMATE N 48 #  
 PINEBANK 69/16<sup>SV</sup>  
**DAM:** ORANGA S6 #  
 ORANGA 20 #

NOTES: Very low birth, high calving ease. Out of a heifer, good heifer mating option.

Actual Birth Weight: 29kgs Dam's age: 24/20  
 Genetic Conditions: AM3%,CA3%,DD3%,NH3%  
 Traits Observed: BWT,200WT,400WT,DOC

Purchaser \$:

<b>LOT 37</b>	<b>ORANGA U080 #</b>	<b>REG:</b> APR	<b>DOB:</b> 24/09/2023	<b>Mating:</b> Natural	<b>ID#:</b> ORA23U080
---------------	----------------------	-----------------	------------------------	------------------------	-----------------------

SEPTEMBER 2024 TRANSTASMAN ANGUS CATTLE EVALUATION										
CE DIR	CE DTRS	GL	BW	200	400	600	MCW	Milk	SS	DTC
+6.2	+7.0	-4.7	+1.2	+25	+50	+68	+29	+17	-0.4	-2.8
49%	39%	57%	71%	67%	67%	63%	62%	55%	54%	27%
CWT	EMA	RIB	RUMP	RBY	IMF	NFI-I	DOC	TACE		
+39	+5.9	+1.4	+0.7	+0.8	+2.0	+0.5	+16	INDEXES (\$)		
54%	48%	50%	50%	42%	53%	41%	58%	\$A	\$PRO	
								\$152	\$94	

KAKAHU PEPPER 18046<sup>PV</sup>  
**SIRE:** KAKAHU 20124<sup>PV</sup>  
 KAKAHU 18496<sup>SV</sup>  
 NGAPUTAHI K166 #  
**DAM:** ORANGA 106 #  
 ORANGA 25 #

NOTES: Low birth, high calving ease. Good heifer mating option.

Actual Birth Weight: 31kgs Dam's age: 106/19  
 Genetic Conditions: AM3%,CA3%,DD4%,NH3%  
 Traits Observed: BWT,200WT,400WT,DOC

Purchaser \$:

<b>LOT 38</b>	<b>ORANGA U103 #</b>	<b>REG:</b> APR	<b>DOB:</b> 02/10/2023	<b>Mating:</b> Natural	<b>ID#:</b> ORA23U103
---------------	----------------------	-----------------	------------------------	------------------------	-----------------------

SEPTEMBER 2024 TRANSTASMAN ANGUS CATTLE EVALUATION										
CE DIR	CE DTRS	GL	BW	200	400	600	MCW	Milk	SS	DTC
+6.3	+7.3	-4.9	+1.6	+31	+59	+78	+47	+15	0.0	-2.6
52%	41%	60%	72%	67%	68%	65%	64%	56%	58%	30%
CWT	EMA	RIB	RUMP	RBY	IMF	NFI-I	DOC	TACE		
+43	+5.2	+0.1	-0.8	+0.9	+1.9	+0.3	+28	INDEXES (\$)		
55%	52%	54%	54%	46%	57%	45%	59%	\$A	\$PRO	
								\$155	\$98	

KAKAHU PEPPER 18046<sup>PV</sup>  
**SIRE:** KAKAHU 20124<sup>PV</sup>  
 KAKAHU 18496<sup>SV</sup>  
 PINEBANK 69/16<sup>SV</sup>  
**DAM:** ORANGA R20099 #  
 ORANGA 27 #

NOTES: Low birth, high calving ease. Good heifer mating option.

Actual Birth Weight: 30kgs Dam's age: 99/20  
 Genetic Conditions: AM2%,CA2%,DD2%,NH2%  
 Traits Observed: BWT,200WT,400WT,DOC

Purchaser \$:

<b>LOT 39</b>	<b>ORANGA U066 #</b>	<b>REG:</b> APR	<b>DOB:</b> 20/09/2023	<b>Mating:</b> Natural	<b>ID#:</b> ORA23U066
---------------	----------------------	-----------------	------------------------	------------------------	-----------------------

SEPTEMBER 2024 TRANSTASMAN ANGUS CATTLE EVALUATION										
CE DIR	CE DTRS	GL	BW	200	400	600	MCW	Milk	SS	DTC
+7.2	+7.5	-5.3	+0.9	+27	+51	+71	+38	+17	-0.3	-2.7
49%	39%	58%	71%	67%	67%	64%	62%	54%	54%	27%
CWT	EMA	RIB	RUMP	RBY	IMF	NFI-I	DOC	TACE		
+40	+5.7	+1.3	+0.5	+0.7	+2.0	+0.5	+20	INDEXES (\$)		
54%	48%	50%	50%	42%	53%	41%	57%	\$A	\$PRO	
								\$149	\$93	

KAKAHU PEPPER 18046<sup>PV</sup>  
**SIRE:** KAKAHU 20124<sup>PV</sup>  
 KAKAHU 18496<sup>SV</sup>  
 NGAPUTAHI K166 #  
**DAM:** ORANGA 2 #  
 ORANGA 33 #

NOTES: Very low birth, high calving ease. Good heifer mating option.

Actual Birth Weight: 28kgs Dam's age: 02/20  
 Genetic Conditions: AM3%,CA3%,DD4%,NH3%  
 Traits Observed: BWT,200WT,400WT,DOC

Purchaser \$:

<b>LOT 40</b>	<b>ORANGA U107 #</b>	<b>REG:</b> APR	<b>DOB:</b> 03/10/2023	<b>Mating:</b> Natural	<b>ID#:</b> ORA23U107
---------------	----------------------	-----------------	------------------------	------------------------	-----------------------

SEPTEMBER 2024 TRANSTASMAN ANGUS CATTLE EVALUATION										
CE DIR	CE DTRS	GL	BW	200	400	600	MCW	Milk	SS	DTC
+6.8	+7.7	-5.1	+1.0	+27	+49	+69	+39	+13	-0.5	-2.2
51%	40%	59%	72%	68%	69%	65%	63%	56%	56%	29%
CWT	EMA	RIB	RUMP	RBY	IMF	NFI-I	DOC	TACE		
+37	+5.4	+0.9	-0.4	+0.9	+1.9	+0.4	+30	INDEXES (\$)		
56%	50%	53%	53%	45%	55%	44%	60%	\$A	\$PRO	
								\$140	\$87	

KAKAHU PEPPER 18046<sup>PV</sup>  
**SIRE:** KAKAHU 20124<sup>PV</sup>  
 KAKAHU 18496<sup>SV</sup>  
 PINEBANK 69/16<sup>SV</sup>  
**DAM:** ORANGA 38 #  
 ORANGA 158 #

NOTES: Low birth, high calving ease and docility. Good heifer mating option.

Actual Birth Weight: 30kgs Dam's age: 38/19  
 Genetic Conditions: AM3%,CA3%,DD3%,NH3%  
 Traits Observed: BWT,200WT,400WT,DOC

Purchaser \$:

ANGUS AUSTRALIA BREED AVG. EBVS FOR 2022 BORN CALVES																	INDEXES (\$)			
CE DIR	CE DTRS	GL	BW	200	400	600	MCW	Milk	SS	DTC	CWT	EMA	RIB	RUMP	RBY	IMF	NFI-F	DOC	\$A	\$PRO
+1.8	+2.7	-4.4	+4.0	+51	+92	+119	+102	+17	+2.2	-4.7	+67	+6.4	+0.0	-0.3	+0.5	+2.3	+0.22	+20	+\$200	+\$149



# YEARLING BULLS

<b>LOT 41</b>	<b>ORANGA U090 #</b>	<b>REG:</b> APR	<b>DOB:</b> 27/09/2023	<b>Mating:</b> Natural	<b>ID#:</b> ORA23U090
---------------	----------------------	-----------------	------------------------	------------------------	-----------------------

SEPTEMBER 2024 TRANSTASMAN ANGUS CATTLE EVALUATION										
CE DIR	CE DTRS	GL	BW	200	400	600	MCW	Milk	SS	DTC
+6.8	+4.9	-1.9	+1.2	+24	+41	+63	+43	+15	+0.4	-2.5
48%	38%	56%	72%	67%	68%	64%	60%	57%	51%	27%
CWT	EMA	RIB	RUMP	RBY	IMF	NFI-I	DOC	TACE		
+24	+3.4	+3.3	+3.0	+0.2	+2.6	+0.4	+12	INDEXES (\$)		
54%	45%	48%	48%	41%	50%	39%	55%	\$A	\$PRO	
								\$124	\$78	

MATAURI CRIKEY G244 #  
**SIRE:** PINEBANK P06<sup>SV</sup>  
 PINEBANK 230/16 #  
 UNKNOWN  
**DAM:** ORANGA 39 #  
 UNKNOWN

NOTES: Low birth, high calving ease. Good mating option, out of 10yr cow.

**Actual Birth Weight:** 32kgs **Dam's age:** 39/14  
**Genetic Conditions:** AM6%,CA7%,DD6%,NH6%  
**Traits Observed:** BWT,200WT,400WT,DOC

Purchaser \$:

<b>LOT 42</b>	<b>ORANGA U122 #</b>	<b>REG:</b> APR	<b>DOB:</b> 20/10/2023	<b>Mating:</b> Natural	<b>ID#:</b> ORA23U122
---------------	----------------------	-----------------	------------------------	------------------------	-----------------------

SEPTEMBER 2024 TRANSTASMAN ANGUS CATTLE EVALUATION										
CE DIR	CE DTRS	GL	BW	200	400	600	MCW	Milk	SS	DTC
+6.3	+3.2	-2.8	+1.9	+28	+61	+77	+44	+14	-0.1	-3.1
55%	45%	61%	70%	69%	70%	67%	66%	58%	60%	36%
CWT	EMA	RIB	RUMP	RBY	IMF	NFI-I	DOC	TACE		
+36	+1.8	+4.0	+4.4	+0.3	+0.4	-0.0	+34	INDEXES (\$)		
59%	55%	58%	57%	52%	59%	49%	58%	\$A	\$PRO	
								\$142	\$97	

GLANWORTH WAIGROUP 1213 #  
**SIRE:** PINEBANK 135Q<sup>SV</sup>  
 PINEBANK 154/16 #  
 PINEBANK 27/13 #  
**DAM:** ORANGA 53 #  
 ORANGA 29 #

NOTES: Low birth, high calving ease. Docility, good heifer mating option.

**Actual Birth Weight:** 31kgs **Dam's age:** 53/19  
**Genetic Conditions:** AM3%,CA3%,DD3%,NH3%  
**Traits Observed:** BWT,200WT,400WT,DOC

Purchaser \$:

<b>LOT 43</b>	<b>ORANGA U118 #</b>	<b>REG:</b> APR	<b>DOB:</b> 10/10/2023	<b>Mating:</b> Natural	<b>ID#:</b> ORA23U118
---------------	----------------------	-----------------	------------------------	------------------------	-----------------------

SEPTEMBER 2024 TRANSTASMAN ANGUS CATTLE EVALUATION										
CE DIR	CE DTRS	GL	BW	200	400	600	MCW	Milk	SS	DTC
+5.2	+4.7	-1.9	+2.6	+24	+49	+64	+46	+12	+0.1	-3.8
52%	42%	61%	73%	69%	70%	66%	65%	59%	56%	31%
CWT	EMA	RIB	RUMP	RBY	IMF	NFI-I	DOC	TACE		
+23	+2.9	+3.4	+4.0	+0.3	+1.6	+0.2	+14	INDEXES (\$)		
57%	50%	53%	53%	46%	55%	44%	59%	\$A	\$PRO	
								\$135	\$94	

MATAURI CRIKEY G244 #  
**SIRE:** PINEBANK P06<sup>SV</sup>  
 PINEBANK 230/16 #  
 PINEBANK 27/13 #  
**DAM:** ORANGA 81 #  
 UNKNOWN

NOTES: Moderate birth, good calving ease.

**Actual Birth Weight:** 37kgs **Dam's age:** 81/17  
**Genetic Conditions:** AM3%,CA4%,DD3%,NH3%  
**Traits Observed:** BWT,200WT,400WT,DOC

Purchaser \$:

<b>LOT 44</b>	<b>ORANGA U109 #</b>	<b>REG:</b> APR	<b>DOB:</b> 06/10/2023	<b>Mating:</b> Natural	<b>ID#:</b> ORA23U109
---------------	----------------------	-----------------	------------------------	------------------------	-----------------------

SEPTEMBER 2024 TRANSTASMAN ANGUS CATTLE EVALUATION										
CE DIR	CE DTRS	GL	BW	200	400	600	MCW	Milk	SS	DTC
+3.4	+4.3	-4.1	+3.0	+29	+53	+72	+42	+18	-0.8	-3.0
54%	43%	65%	72%	69%	69%	67%	65%	58%	61%	32%
CWT	EMA	RIB	RUMP	RBY	IMF	NFI-I	DOC	TACE		
+40	+5.9	+0.4	-0.3	+1.1	+1.3	+0.4	+20	INDEXES (\$)		
57%	55%	57%	57%	49%	60%	48%	61%	\$A	\$PRO	
								\$144	\$80	

KAKAHU PEPPER 18046<sup>PV</sup>  
**SIRE:** KAKAHU 20124<sup>PV</sup>  
 KAKAHU 18496<sup>SV</sup>  
 PINEBANK 93/15 #  
**DAM:** ORANGA 102 #  
 ORANGA 66 #

NOTES: Moderate birth, good calving ease.

**Actual Birth Weight:** 35kgs **Dam's age:** 102/20  
**Genetic Conditions:** AMFU,CAFU,DD1%,NHFU  
**Traits Observed:** BWT,200WT,400WT,DOC

Purchaser \$:

<b>LOT 45</b>	<b>ORANGA U096 #</b>	<b>REG:</b> APR	<b>DOB:</b> 30/09/2023	<b>Mating:</b> Natural	<b>ID#:</b> ORA23U096
---------------	----------------------	-----------------	------------------------	------------------------	-----------------------

SEPTEMBER 2024 TRANSTASMAN ANGUS CATTLE EVALUATION										
CE DIR	CE DTRS	GL	BW	200	400	600	MCW	Milk	SS	DTC
+4.8	+6.7	-4.7	+3.1	+35	+62	+85	+55	+14	0.0	-2.4
51%	40%	59%	72%	68%	68%	65%	63%	55%	56%	29%
CWT	EMA	RIB	RUMP	RBY	IMF	NFI-I	DOC	TACE		
+50	+5.3	+0.5	-0.8	+0.9	+1.7	+0.4	+29	INDEXES (\$)		
55%	50%	52%	52%	45%	55%	44%	58%	\$A	\$PRO	
								\$157	\$100	

KAKAHU PEPPER 18046<sup>PV</sup>  
**SIRE:** KAKAHU 20124<sup>PV</sup>  
 KAKAHU 18496<sup>SV</sup>  
 PINEBANK 69/16<sup>SV</sup>  
**DAM:** ORANGA 51 #  
 ORANGA 60 #

NOTES: Moderate birth, good calving ease and docility. Nice bull.

**Actual Birth Weight:** 35kgs **Dam's age:** 51/20  
**Genetic Conditions:** AM3%,CA3%,DD3%,NH3%  
**Traits Observed:** BWT,200WT,400WT,DOC

Purchaser \$:

ANGUS AUSTRALIA BREED AVG. EBVS FOR 2022 BORN CALVES																	INDEXES (\$)			
CE DIR	CE DTRS	GL	BW	200	400	600	MCW	Milk	SS	DTC	CWT	EMA	RIB	RUMP	RBY	IMF	NFI-F	DOC	\$A	\$PRO
+1.8	+2.7	-4.4	+4.0	+51	+92	+119	+102	+17	+2.2	-4.7	+67	+6.4	+0.0	-0.3	+0.5	+2.3	+0.22	+20	+200	+149

# YEARLING BULLS

<b>LOT 46</b>	<b>ORANGA U110</b> <sup>SV</sup>	<b>REG:</b> APR	<b>DOB:</b> 06/10/2023	<b>Mating:</b> Natural	<b>ID#:</b> ORA23U110
---------------	----------------------------------	-----------------	------------------------	------------------------	-----------------------

SEPTEMBER 2024 TRANSTASMAN ANGUS CATTLE EVALUATION										
CE DIR	CE DTRS	GL	BW	200	400	600	MCW	Milk	SS	DTC
+3.8	+5.0	-5.0	+3.3	+36	+66	+79	+71	+13	+2.0	-3.1
60%	49%	79%	80%	81%	79%	79%	76%	69%	75%	36%
CWT	EMA	RIB	RUMP	RBY	IMF	NFI-I	DOC	TACE		
+31	+9.0	+3.2	+3.3	+0.8	+2.0	-0.1	+25	INDEXES (\$)		
66%	64%	65%	66%	56%	70%	56%	71%	\$A	\$PRO	
								\$171	\$123	

TAIMATE P52 #  
**SIRE:** TAIMATE R177 <sup>SV</sup>  
 TAIMATE N 48 #  
 PINEBANK P06 <sup>SV</sup>  
**DAM:** ORANGA S9 #  
 ORANGA 76 #

NOTES: Moderate birth, good calving ease. Out of a heifer. Genomics done.



Purchaser \$:

Actual Birth Weight: 34kgs Dam's age: 09/21

Genetic Conditions: AM2%,CA2%,DD2%,NH2%

Traits Observed: BWT,200WT,400WT,DOC,Genomics

<b>LOT 47</b>	<b>ORANGA U026</b> #	<b>REG:</b> APR	<b>DOB:</b> 09/09/2023	<b>Mating:</b> AI	<b>ID#:</b> ORA23U026
---------------	----------------------	-----------------	------------------------	-------------------	-----------------------

SEPTEMBER 2024 TRANSTASMAN ANGUS CATTLE EVALUATION										
CE DIR	CE DTRS	GL	BW	200	400	600	MCW	Milk	SS	DTC
+5.3	+5.5	-4.7	+3.2	+51	+88	+114	+100	+13	+1.0	-2.2
51%	39%	81%	73%	68%	69%	66%	63%	56%	57%	28%
CWT	EMA	RIB	RUMP	RBY	IMF	NFI-I	DOC	TACE		
+62	+5.7	-1.3	-2.5	+0.8	+1.4	-0.4	+33	INDEXES (\$)		
57%	52%	53%	52%	46%	56%	42%	57%	\$A	\$PRO	
								\$179	\$121	

SPRING COVE RENO 4021 #  
**SIRE:** WOODHILL AUTHENTIC <sup>PV</sup>  
 WOODHILL EVERGREEN U181-A130 #  
 PINEBANK 69/16 <sup>SV</sup>  
**DAM:** ORANGA S20 #  
 ORANGA 161 #

NOTES: Authentic. Moderate birth, very good calving ease, good growth and docility. Out of a heifer.



Purchaser \$:

Actual Birth Weight: 34kgs Dam's age: 20/21

Genetic Conditions: AM3%,CA3%,DD3%,NH3%

Traits Observed: GL,BWT,200WT,400WT,DOC

<b>LOT 48</b>	<b>ORANGA U024</b> <sup>SV</sup>	<b>REG:</b> APR	<b>DOB:</b> 09/09/2023	<b>Mating:</b> AI	<b>ID#:</b> ORA23U024
---------------	----------------------------------	-----------------	------------------------	-------------------	-----------------------

SEPTEMBER 2024 TRANSTASMAN ANGUS CATTLE EVALUATION										
CE DIR	CE DTRS	GL	BW	200	400	600	MCW	Milk	SS	DTC
+6.5	+5.3	-4.5	+3.7	+57	+96	+128	+106	+16	+2.8	-3.2
59%	47%	81%	80%	80%	78%	78%	74%	69%	74%	34%
CWT	EMA	RIB	RUMP	RBY	IMF	NFI-I	DOC	TACE		
+61	+2.6	-2.9	-3.1	-0.5	+4.0	+0.1	+21	INDEXES (\$)		
66%	64%	64%	64%	54%	69%	54%	71%	\$A	\$PRO	
								\$199	\$146	

SPRING COVE RENO 4021 #  
**SIRE:** WOODHILL AUTHENTIC <sup>PV</sup>  
 WOODHILL EVERGREEN U181-A130 #  
 PINEBANK P06 <sup>SV</sup>  
**DAM:** ORANGA S86 #  
 ORANGA 8 #

NOTES: Authentic. Moderate birth, high calving ease, high growth +4 IMF. Out of a heifer. Good Bull. Genomics done.



Purchaser \$:

Actual Birth Weight: 34kgs Dam's age: 86/21

Genetic Conditions: AM2%,CA2%,DD2%,NH2%

Traits Observed: GL,BWT,200WT,400WT,DOC,Genomics

<b>LOT 49</b>	<b>ORANGA U117</b> #	<b>REG:</b> APR	<b>DOB:</b> 10/10/2023	<b>Mating:</b> Natural	<b>ID#:</b> ORA23U117
---------------	----------------------	-----------------	------------------------	------------------------	-----------------------

SEPTEMBER 2024 TRANSTASMAN ANGUS CATTLE EVALUATION										
CE DIR	CE DTRS	GL	BW	200	400	600	MCW	Milk	SS	DTC
+6.2	+3.3	-1.8	+3.2	+31	+62	+79	+59	+12	+1.3	-3.8
52%	41%	62%	74%	70%	70%	67%	65%	59%	57%	31%
CWT	EMA	RIB	RUMP	RBY	IMF	NFI-I	DOC	TACE		
+33	+3.1	+3.1	+3.1	+0.4	+1.5	+0.3	+20	INDEXES (\$)		
57%	50%	54%	53%	47%	55%	44%	59%	\$A	\$PRO	
								\$152	\$113	

MATAURI CRIKEY G244 #  
**SIRE:** PINEBANK P06 <sup>SV</sup>  
 PINEBANK 230/16 #  
 PINEBANK 112/16 #  
**DAM:** ORANGA 87 #  
 ORANGA 1 #

NOTES: Moderate birth, good calving ease.

Purchaser \$:

Actual Birth Weight: 39kgs Dam's age: 87/18

Genetic Conditions: AM3%,CA4%,DD3%,NH3%

Traits Observed: BWT,200WT,400WT,DOC

<b>LOT 50</b>	<b>ORANGA U123</b> #	<b>REG:</b> APR	<b>DOB:</b> 21/10/2023	<b>Mating:</b> Natural	<b>ID#:</b> ORA23U123
---------------	----------------------	-----------------	------------------------	------------------------	-----------------------

SEPTEMBER 2024 TRANSTASMAN ANGUS CATTLE EVALUATION										
CE DIR	CE DTRS	GL	BW	200	400	600	MCW	Milk	SS	DTC
+3.7	+5.5	-4.2	+2.7	+28	+53	+73	+38	+15	-0.4	-2.8
49%	39%	57%	67%	66%	67%	63%	62%	54%	54%	27%
CWT	EMA	RIB	RUMP	RBY	IMF	NFI-I	DOC	TACE		
+41	+6.0	+1.1	+0.4	+0.9	+1.8	+0.5	+10	INDEXES (\$)		
54%	48%	50%	50%	42%	53%	41%	57%	\$A	\$PRO	
								\$150	\$92	

KAKAHU PEPPER 18046 <sup>PV</sup>  
**SIRE:** KAKAHU 20124 <sup>PV</sup>  
 KAKAHU 18496 <sup>SV</sup>  
 NGAPUTAHU K166 #  
**DAM:** ORANGA 20 #  
 ORANGA 152 #

NOTES: Moderate birth, good calving ease.

Purchaser \$:

Actual Birth Weight: 34kgs Dam's age: 20/20

Genetic Conditions: AM3%,CA3%,DD4%,NH3%

Traits Observed: BWT,200WT,400WT,DOC

ANGUS AUSTRALIA BREED AVG. EBVS FOR 2022 BORN CALVES																	INDEXES (\$)			
CE DIR	CE DTRS	GL	BW	200	400	600	MCW	Milk	SS	DTC	CWT	EMA	RIB	RUMP	RBY	IMF	NFI-F	DOC	\$A	\$PRO
+1.8	+2.7	-4.4	+4.0	+51	+92	+119	+102	+17	+2.2	-4.7	+67	+6.4	+0.0	-0.3	+0.5	+2.3	+0.22	+20	+\$200	+\$149





**CITY  
HONDA**

# **FOR ALL YOUR FARM AND GARDEN NEEDS**

**Our team of experienced technicians service all makes and models of motorcycles, farm and garden equipment!**

**With a fully equipped workshop, on farm service, and on site pick-up and drop-off available, we've got you covered all round. No bull.**

**WORKSHOP@CITYHONDA.CO.NZ | 06 357 7027 EXT 2**







For all your Animal Health needs;

- Large and Small Animal Vets.
- Equine Dentistry Specialist.
- Stock a full range of products.

Give us a call or drop by and see the team at HVC.

## HUNTERVILLE VETERINARY CLUB INC.

4 Bruce Street, Hunterville **Phone** - 06 322 8057



Everyone in the industry knows that **profitability within a cattle system can be improved by making educated predictions with factual data.**

**It's scientifically proven.**

AngusPRO are a group of New Zealand Angus studs that encompass over 40% of New Zealand's registered Angus cattle. These studs have united and made the shift across the ditch, to join the progressive governing body that is Angus Australia.

Angus Australia pride themselves on their quality of leadership in the delivery of innovative programs that will enhance and promote the value of Angus cattle and beef.

Cleardale	Oranga	The Sisters
Focus Genetics	Ranui	Totaranui
Grampians	Rimanui Farms	Twin Oaks
Kahurangi	Rissington	Vermont
Kakahu	Rotowai	Wairere
KauriDowns	Seven Hills	Waitangi
Komako	Stokman	Waiwhero
Lake Farm Genetics	Storth Oaks	Wakare
Mount Linton	Takapoto	Whangara
Ngāputahi	Te Mania	

[anguspro.co.nz](http://anguspro.co.nz)



**FOR ALL ENQUIRIES TO CONTACT:**

**NZ Farmers Livestock Agent:** Darryl Harwood 027 449 1174 or **Vendor:** Blair McCarroll 027 247 7143